

BLUEGRASS BREAKDOWN

Volume 8, Number 3

May/June 1983



'How Sweet It Is!'
Grass Valley is fast Approaching!

California Bluegrass Association

Bluegrass Breakdown is published bimonthly at 735 College Street, Woodland, California, 95695 by the California Bluegrass Association. The CBA is a non-profit organization founded in 1975 and is dedicated to the furtherance of Bluegrass, Old Time, and Gospel music. Membership in the CBA costs \$8.50 per year and includes a subscription to the *Bluegrass Breakdown*. A spouse's membership may be added for an additional \$2.50 and children between 16 and 18 years for an additional \$2.50. All children under the age of 16 may be included for an additional \$1.00 total. Band memberships are available to bands with three or more people for \$5.00 per band member. Subscription to the *Bluegrass Breakdown* are available only to foreign locations. Make checks payable to **California Bluegrass Association** and mail along with the membership application located on the inside of the back cover to the address below. Second Class postage is paid in San Francisco, California and at additional mailing offices, *Bluegrass Breakdown* (USPS 315350). Postmaster, please send address changes to:

Bluegrass Breakdown
735 College Street
Woodland, CA 95695

Board meetings are usually held the second Sunday of each month and all members are invited and encouraged to attend.

Board Meeting Summary

Board of Directors: Ray Edlund (RE), Mark Hogan (MH), Mike Johnson (MJ), Carl Pagter (CP), Don Powell (DP), Karen Quick (KQ), Kathleen Schoggins (KS), Butch Waller (BW), and Karen Walter (KW).

Officers: (That are not Board Members) Diana Deininger (DD), Judith Powell (JP), Fred Volz (FV), Peter Wise (PW).

Meeting of March 13, 1983

Present: MJ, DP, KQ, KS, BW, KW; Officers: JP, DD
Absent: RE, MH, CP; Officers: FV, PW

Jim & Jesse/Osborne Bros. Concert: Ads finalized for college papers. Publicity to use poster service in east bay, SF, and Hayward areas.

Grass Valley: Bands confirmed for September: Blue Flame String Band, Western Pacific, Sidesaddle, Foxfie, Damascus Road

Gates to open on Thursday evening at 5 p.m., with a \$5 charge for the extra night per camper vehicle. Concessions list approved. Porta Potties increased to 36 from 27 used

last June.

Meeting of April 17, 1983

Present: All Board members present and Officers: JP, DD, and FV.

Absent: Officer PW

Jim & Jesse/Osborne Bros. - Sound check and full details gone over. Publicity report given and was decided to give each publicity chairman and cash advance for each event to use for postage, etc., with full accounting of money spent in a report back to the treasurer and Board.

Board voted \$50 to each for June Grass Valley from the GV publicity budget.

Freight & Salvage - New organization was explained by Alan Senauk of the Blue Flame String Band. They are trying to buy out the present owners and are forming a non-profit organization to handle the purchase. The group needs \$13,000. CBA indicated interest and tabled a motion of support until the next meeting, while directing the president to send a letter of support.

Grass Valley: Additional confirmed bands are Train 45,

Continued on Page 3

Board of Directors/Officers of CBA

Diana Deininger

Secretary
735 Hacienda Avenue
Campbell, CA 95008
(408) 379-5056

*Ray Edlund, President

33501 S. Hwy. 1
Gualala, CA 95445
(707) 884-3195

*Mark Hogan

7300 Boris Court #7
Rohnert Park, CA 94928
(707) 795-9471

*Mike Johnson, Treasurer

9025 Alcosta Blvd., #233
San Ramon, CA 94583
(415) 828-1389

*Carl Pagter, Legal Advisor

1809 Meadow Lane
Walnut Creek, CA 94595
(415) 938-4221

Judith Powell

Membership Vice President
735 College Street
Woodland, CA 95695
(916) 662-5691

***Member of the
Board of Directors**

*Don Powell

Vice Chairman
Breakdown Editor
735 College Street
Woodland, CA 95695
(916) 662-2041; 662-5691

*Karen Quick,

Activities vice president
23149 Old Santa Cruz Hwy.
Los Gatos, CA 95030
(408) 353-4408

*Kathleen Schoggins

39936 Michelle Street
Fremont, CA 94538
(415) 656-6156

Fred and Kathryn Volz

Publicity Co-chairmen
8215 Colonial Drive
Stockton, CA 95209
(209) 473-3212

*Butch Waller

721 Rand Avenue, #3
Oakland, CA 94610
(415) 763-2580

*Karen Walter, Chairman

4212-25th Street
San Francisco, CA 94114
(415) 826-3159

Pete Wise

Publicity Co-chairman
P.O. Box 24
Livermore, CA 94550
(415) 443-0250

Special Events

April 29-May 1 - Prado Park, San Bernardino, CA - Sylvia, Riders in the Sky, Bluegrass Cardinals, Prado Regional Park, Chino (714) 888-6078.

May 1 - 8th Avenue String Band, Concert, Hat Creek, CA

May 7-8 - 10th Annual Calico Spring Festival, Calico Ghost Town, Yermo, CA (714) 888-6078.

May 14 - Santa Rosa Fiddle Contest & Entertainment. Veterans Memorial Bldg., 1351 Maple St., Santa Rosa. Four divisions of competition. Adults-\$3.50; Seniors (60+)-\$2.00; Juniors (10-16)-\$2.00; Under 9-Free; Families of 4 or more-\$10.00 (707) 545-2218, 188 Mosshill Court, Santa Rosa, 95405.

May 15 - Benicia Country Fair, Francisa Park, Benicia. Benefit for Solano County Abused Children. 12:30-6 p.m. Adults-\$3.00; 3-15-\$1.50; under 2-Free. J Street Strings, Live Oak Band, Rye Whiskey, Southern Comfort & Co., Henry & Bill Forbes, Old Capital Squares, and Foggy Mt. Cloggers. Games, dancing, music. (707) 746-0646.

May 20-22 - Laguna Seca Bluegrass Festival featuring Sidesaddle, Strictly Country, Spring Mountain Harmony, Bear Creek Ramblers, Bluegrass Monarchs, Mountain View Cloggers. Grace Stewart, 1044 San Simeon Drive. Salinas, CA 93901 (408) 422-1926.

May 21 - Touch of Grass will be playing at The Palms Playhouse in Davis at 8:30 p.m. Cost-\$5.00. Tickets at both Towers, Flipsides Records in Davis. Info: (916) 756-8502.

May 29 - Fiddletown Fiddler's Contest, Amador County Fairgrounds, Plymouth. Info: Fiddletown Community Club, P.O. Box 936, Fiddletown 95629. (209) 245-3047. Contest won last year by CBA member Stacey Pagter - Ed Pagter's daughter. Adults-\$3.50; Children 7-12 - \$1.00; ½ price for seniors. Camping and RV space is \$20 for the weekend - (209) 245-6921.

May 29 - 6th Annual Folk & Bluegrass Festival, Montessori Center School, Campus Field, 3970 La Colina

Board Minutes Continued From Page 2

Touch of Grass, Foggy Mountain Cloggers, and Rose Maddox. Rose will be doing two full sets at the festival.

Tickets for the festival are going fast, as indicated by the treasurer. An early sell out is predicted. Additional concession were approved.

Next Board meeting - May 15 - **THIRD SUNDAY** at the office in Berkeley at 1:30 p.m.

Rd., Santa Barbara, CA 93110. Sam Hinton, Cache Valley Drifters, Floyd County Boys. Adults-\$5; children-\$2. (805)682-5648.

June 10-11-12 - Prado Country Festival, Chino. Merle Haggard, Lynn Anderson, J.D. Crowe & New South, Pacific..ly Bluegrass, Fearsome Foursome Cloggers. \$37 for weekend. Camping \$6 more per night. (714) 381-3511. Ticketron for tickets.

June 10-11 - U.S. Open Fiddlers Contest, Dillon, Montana. Beverhead Chamber of Commerce, Box 830, Dillon, MT 59725 (406) 683-5511 - all sessions ticket \$10.00.

June 11 - River City Bluegrass Festival, Helvita Park on Hwy 16 between Broderick and Woodland, Benefit of The Sacramento Burn Center. Featuring Vern Williams, South Loomis Quickstep, Wild Bunch, Foggy Mountain Cloggers, Fire Mountain Cloggers. Adults-\$5; Under 10-over 65 are Free. Tickets at Bass outlets. Info: (916) 428-3170. 11 a.m.-7 p.m.

June 11-12 - 4th Annual Calaveras Fiddlers Jamboree. 10 a.m.-6 p.m. June 11, 10 a.m.-5 p.m. June 12. Camping (209) 293-7905, 1142 Railroad Flat Road, Mokelumne Hill, CA 95245. A fun weekend.

June 17-18-19 8th Annual Grass Valley Summer Bluegrass Festival sponsored by the California Bluegrass Association at the Nevada County Fairgrounds. Featuring The Lewis Family, Hot Rize, and 10 more bands plus the Foggy Mountain Cloggers. The premier bluegrass event in California. Tickets now on sale at Bass, Ticketron, or from Mike Johnson. See pages 12 & 13 for complete line-up and details.

June 20-25 - National Old-time Fiddlers' Contest, Weiser Idaho. See story this issue for changes in prices and additional information on this fine annual event. Tickets are now on sale and this year will be limited.

Aug. 1-8 - Lark In The Morning Summer Camp, Mendocino, CA. A unique, rare musical experience. Wide range of music styles and types. Over 25 staff members including many members of CBA member bands. Full camp-\$105, Monday thru Thurs.-\$75; Friday-Monday-\$75. (707) 964-5569, Box 1176, Mendocino 95460.

Aug. 5-6-7 - Prado Country Festival, Chino. Jerry Clower, Country Gentlemen, Quicksilver, Damascus Road, High Country. \$37.00 for weekend, Camping \$6 more per night. (714) 381-3511. Ticketron.

Continued on Page 4

KCSM-FM expands bluegrass music play

Beginning in May, KCSM-FM in San Mateo is expanding their weekly **Bay Area Bluegrass** program to a full five hours of Bluegrass music each Sunday afternoon. Station management cites the increased response from listeners in recent months for the expanded Bluegrass programming, as well as a need to fill the void that was left when Gilroy's KFAT changed music format earlier in the year.

Bay Area Bluegrass producer Pete Lude' says that the new time slot from noon until 2 Sunday afternoons will be used to broadcast an excellent series of recorded highlights from the "Bluegrass Music Festival of the United States", held each year in downtown Louisville, Kentucky. The concert series will include performances by Bill Monroe, Ralph Stanley, The Seldom Scene, J.D. Crowe, Hot Rize and many others. The station will continue to replay their recordings of last September's Grass Valley festival, with a different band featured each week beginning at 3 p.m. New releases and requests round out the show until 5.

The **Bay Area Bluegrass** staff say they welcome comments or suggestions from listeners, and invite them to write to the station. The address is KCSM-FM, 1700 West Hillsdale Blvd., San Mateo, CA 94402.

Bay Area Bluegrass Schedule

Sunday's Noon-5:00 p.m.

KCSM-FM - 91

- May 1** Pete Lude' hosts, the *Grant Street String Band*, recorded at the Fall Grass Valley Festival, will be featured beginning at 3 p.m.
- May 8** Starting at noon, the first in the series of recorded concerts from Louisville, featuring *The Seldom Scene*, *Hot Rize*, with special guest Sam Bush, *Transatlantic Bluegrass* (from France), and *Michael McCreesh* and Company. At 3 p.m., *High Country* will be featured, with their Saturday af-

ternoon set at Grass Valley. Barbara Whitaker hosts.

- May 15** Pete Lude' returns with another jam-packed afternoon of Bluegrass. At 12 noon, Pete brings you the next in the Louisville concert series, with *Ralph Stanley*, *Buck White* and *the Down Home Folks* with special guest Ricky Skaggs, *Brian Bowers*, *Larry McNeely and Friends*, and the *Acoustic Heavy Orchestra* from Japan. The featured Grass Valley Band-of-the-week is *Touch of Grass*, beginning at 3 p.m.

- May 22** Barbara Whitaker is back with this week's concert series, beginning at noon, featuring *J.D. Crowe and the New South*, *The McClain Family Band*, *Berline*, *Crary and Hickman*, and the 1981 Best New Bluegrass Band of the Year Contest. At 3, Barbara brings you the *Eighth Avenue String Band*, also recorded at the Grass Valley Fall Festival by KCSM.

- May 29** Beginning at noon, this week's concert features *Bill Monroe and the Bluegrass Boys* with special guest John Duffy of the Seldom Scene. Also in performance will be *The Reel World String Band*, *New Horizon*, and from Ireland, *De Dannan*. At 2, your host Dave Radlauer continues with Old-Timey and Bluegrass songs about Trains, Trucks, and Long, lonesome roads that are rough and rocky in a special program looking at songs about all modes of transportation.

- June 5** *The Seldom Scene* headlines this week's concert from Louisville, beginning at noon. Also on the bill are *The David Grisman Quartet* with special guest Sam Bush, and the *New Grass Revival*. At 3, the featured band from the Fall Grass Valley Festival is *The Bluegrass Cardinals*. Pete Lude' hosts.

- June 12** The noon concert this week is from the 1982 "Kentucky Fried Chicken Bluegrass Festival" in Louisville (Finger-Pickin' Good!). Featured performers include *Ralph Stanley and the Clinch Mountain Boys*, *J.D. Crowe and the New South*, *Hot Rize* and the alter-ego Red Knuckle and the Trailblazers who are joined on stage by Sam Bush), Darryl Anger, Mike Marshall, and Bela Fleck, and *Walt Michael and Company*. KCSM's Barbara Whitaker takes the helm at 2 for more of the best in Bluegrass. At 3 p.m., the featured band from Grass Valley is *The Good 'Ol Persons*.

- June 19** Host Pete Lude' begins the show at noon with *Doyle Lawson* and *Quicksilver* in concert. Also featured on stage will be *Berline*, *Crary and Hickman*, *the Johnson* and *De Dannan*. At 2 p.m., another live-on-tape concert recorded last February in Washington, D.C., featuring *The Seldom Scene* with special guest John Starling, and *The Johnson Mountain Boys*.

Continued on Page 5

Special Events

Continued from Page 3

Sept. 2-3-4 - 5th Annual Grass Valley Fall Bluegrass Festival sponsored by the CBA. Featuring Joe Val and the New England Boys. This is a date change and full details will be out later this spring.

Sept. 2-3-4 - Strawberry Music Festival, Yosemite area Doc & Merle Watson, David Bromberg Quintet, Sam Bush & New Grass Revival, John Hartford, Robin Flower, Rythmn Bros., Cache Valley Drifters, Fiddlesticks, \$32.00 for 3 day with camping. P.O. Box 210, Modesto, 95353 (209) 571-0254.

Sept. 16-17-18 - Prado Country Festival, Chino. Ricky Skaggs, Mel Tillis, Tom T. Hall, Terri Gibbs, White Family, Hot Rize. \$37.00 for weekend, Camping \$6 per night. (714) 381-3511. Ticketron



Possum Trot



Sunny South



The Motherless Children



Gryphon Quintet

News & Things

Oroville's Sandy Rothman had a superb article on Ed Neff in the April 1983 issue of *Bluegrass Unlimited*.

For those who don't subscribe, *Bluegrass Unlimited* has increasingly recognized the Far West Bluegrass scene and is truly becoming THE national Bluegrass magazine. If your interested in subscribing - see the end of this item.

Ed's profile tells, somewhat, a part of the growth of bluegrass music and its popularity in Northern California. Sandy touches on Ed's part in *High Country*, *Done Gone Band*, *Vern Williams Band*, and *The New Done Gone Band*.

Good article - thanks to Sandy and *Bluegrass Unlimited*.

Subscription info: 7533 Gary Road, Manassas, Virginia 22110, \$12.00 per year. Well worth the price.

KCSM

Continued from Page 4

June 26 At Noon: *Bill Monroe and The Bluegrass Boys*, in concert, including the first-ever on-stage jam with Bill, David Grisman, and Sam Bush. Also in performance will be *Country Gazette*, plus the 1982 "Best New Bluegrass Band of the Year" contest. Recorded at the 1982 Kentucky Fried Chicken Bluegrass Festival in Louisville, Kentucky. At 2, host Dave Radlauer continues with Old-Timey and Bluegrass Patriotic Songs in preparation for Independence Day.

Coming in July: Recorded highlights from the *Osborne Brothers* and *Jim & Jesse* recorded at the CBA-sponsored concert at Chabot College in April.

Thanks

Thanks to Oscar Ericksen, Karen Quick, Barbara Whitaker and Pete Wise for their help on this issue.

Next Issue Deadline

Deadline for the July/August issue will be June 20. The issue will feature a review of June Grass Valley and a preview of the fantastic Labor Day Grass Valley.

Notes about Grass Valley Festival

Several changes will go into effect at the Summer Grass Valley Festival.

The gates will open at 5 p.m. on Thursday, June 16. Camping will be allowed on Thursday night, but the Fairgrounds will be collecting a \$5 camping fee upon entrance. We do not have control of camping beyond the staff erecting the stage, etc. NO parking will be allowed along McCourtney Road prior to 5 p.m. The California Highway Patrol will be ticketing anyone parked there. Plan to arrive at 5. Also the festival closes at 6 p.m. on Sunday night and all people other than the staff to do the teardown must leave the grounds by 8 p.m. Sunday evening.

The Board has changed the ticket structure by allowing senior complimentary tickets to only those seniors who are members of the California Bluegrass Association. In the past this was free to all seniors, but the number of ticket requests from non-CBA seniors had gotten to over 300 tickets, an expense that was making it impossible for CBA to cover costs. Also this forced out paying customers, as we had a number of persons on the grounds that we could not exceed.

Seniors who are members of CBA must secure their tickets in advance from Mike Johnson, CBA treasurer.



FIELD GUIDE TO WESTERN BANDS

ARKANSAS SHEIKS (707) 763-5447 [Petaluma]

BLUE FLAME STRING BAND (415) 387-9648 [San Francisco]

May 6 - Freight & Salvage, Berkeley
May 20 - Unitas House, Bancroft & College, Berkeley
May 21 - Paul's Saloon, San Francisco
June 17 - Paul's Saloon
Sat. June 25 Paul's Saloon. (tentative--call 922-2456 to check.)
July 2 - Paul's Saloon
July 3 - The Farm, San Francisco
July 8-10 - Winnipeg Folk Festival, Winnipeg, Manitoba, Canada
July 22 - Peter Britt Festival, Medford, Oregon
Aug. 1-7 - Lark In The Morning Camp, Mendocino
(See special events listing for more info)
Aug. 12-13 - Calgary Folk Festival, Calgary, Alberta, Canada.
Sept. 3-4 - Grass Valley Bluegrass Festival

BLUEGRASS MONARCHS (408) 372-1461 [Pacific Grove]

Mondays - Deep Six, Monterey
Wednesdays - Kalisa's, Monterey

BLUEGRASS ONE (415) 364-6624 [Bay Area]

Tuesdays - Paul's Saloon, San Francisco
May 11 - De Anza College, Cupertino (6-8 p.m.)
May 11 - The Cellar, Los Altos (9-11 p.m.)
May 27 - New Varsity Theater, Palo Alto
June 18 - New Varsity Theater, Palo Alto

BUZZARD'S ROOST (702) 329-4780 [Reno]

CHARLIE'S BAND (Sawplayer Charlie Blacklock) (415) 523-4669 [Alameda]

COUNTRY HAM (415) 938-4221 [Walnut Creek]
June 17-19 - Grass Valley Summer Bluegrass Festival

DAMASCUS ROAD (714) 359-8872 [Riverside]
Sept 3-4 - Grass Valley Fall Bluegrass Festival

DR. CORN'S BLUEGRASS REMEDY (503) 645-0575 [Portland, Oregon]

8TH AVENUE STRING BAND (916) 872-8536 [Chico]
May 1 - Fall River Mills Theater, Fall River Mills
May 6 - Deja Vu Mining Company, Chico
May 13 - Deja Vu Mining Company, Chico
May 20 - Deja Vu Mining Company, Chico
May 28 - Anderson Bluegrass Festival, Anderson River Park
May 29 - Silver Dollar Fair, Chico
June 3-5 - The Craft Fair, Reno

THE FIDDLE DUSTERS (707) 422-7838 [Fairfield]

FINGER PICKIN GOOD (503) 474-2214 [Grants Pass, OR]

FOGGY MOUNTAIN CLOGGERS (415) 828-9016 [San Ramon]

June 11 - River City Bluegrass Festival
June 17-19 - Grass Valley Summer Bluegrass Festival
Sept. 2-3-4 - Grass Valley Fall Bluegrass Festival

GOLD COUNTRY (408) 737-9074 [San Jose]
Tuesdays - The Mother Lodge, Cupertino

GOLD RUSH (503) 266-5061 [Portland, OR]

GOOD 'N' COUNTRY (503) 686-9325 [Eugene, OR]

GOOD OL' PERSONS (415) 474-5368 [Bay Area]

Thursdays - Paul's Saloon, San Francisco
Fridays - Red Vest Pizza, El Cerrito
May 14 - The Cellar, Los Altos
May 22 - Bluegrass Festival, The Stoney Ridge, Winery
May 23 - Santa Rosa Junior College, noontime and evening concert at 8 p.m. in Newman Aud.
June 2-3 - Tipton, Iowa Bluegrass Festival
June 8 - Bill Monroe's Fan Fare Show, Nashville
June 10-12 - Bill Monroe's Bean Blossom Bluegrass Festival, Indiana
June 18-19 - Grass Valley Summer Bluegrass Festival
July 4 - Krissy Field, SF, July 4th Celebration of the Golden Gate National Recreation Area

GRANT STREET STRING BAND (415) 548-3021 [East Bay]

May 3 - Cal State Stanislaus, Turlock (noon)
May 3 - Michael's, Merced (8:30-11:30 p.m.)
May 4 - Cal State University, Fresno (noon)
May 4 - Wild Blue Yonder, Fresno
May 6 - Old Time Cafe, Leucadia
May 7 - McCabe's Guitar Shop, Long Beach
May 10 - Phoenix Bluegrass Assn. Concert, Phoenix, Arizona
May 11-14 - Charly's, Flagstaff, AZ
May 21 - Freight & Salvage, Berkeley
May 22 - Stoney Ridge Winery, Pleasanton
May 28 - Paul's Saloon, San Francisco
June 11 - Paul's Saloon, San Francisco
June 15 - Levi-Strauss Plaza, San Francisco (Noon)
June 17-18 - Grass Valley Summer Bluegrass Festival
June 19 - Sonoma County Fair

GRASS MENAGERIE (408) 358-1524 [San Jose]
Thursdays - The Mother Lode, Cupertino

HEARTLAND (415) 787-1791 [Crockett]
Saturdays - Carousel Pizza, Concord
Sundays - Paul's Saloon, San Francisco
June 17-19 - Grass Valley Summer Bluegrass Festival

HIGH COUNTRY (415) 776-6713 [San Francisco]
Wednesdays - Paul's Saloon, SF (through May 20)
Fridays - Paul's Saloon, SF (through May 20)
May 21 - Children's Hospital Festival - Pleasanton
May 24 - Ogden, Utah
May 25 - Old Church Hall, Denver, Colorado
May 27-28 - 2nd Annual Council Bluffs Bluegrass
Music and Cloggers Convention, Council Bluffs,
Iowa.
May 29 - Offut AFB, Omaha, Nebraska
May 31-June 1 - The Zoo, Lincoln, NE
June 2 - The Blue Note, Columbia, MO
June 3 - Central Missouri Bluegrass Festival,
Glasgo, MO
June 4-5 - Tipton, Iowa Bluegrass Music Festival
June 8 - Bill Monroe's Fanfare Week Bluegrass Show,
Nashville, TN
June 10-11 - Bill Monroe's Beanblossom Bluegrass
Festival, Beanblossom, IN
June 15 - Logan, Utah
June 17-19 - CBA Summer Grass Valley Bluegrass
Festival, Grass Valley
June 22, 25, 29 - Paul's Saloon, SF

HIGH MOUNTAIN RAMBLERS (503) 779-2532 [Medford, OR]

May 1 - Bacchus Goes Bluegrass Festival, Hillsboro, OR
May 7 - Rogue Community College, Grants Pass, OR
May 14 - The Brewery, Grants Pass, OR
May 20 - May Festival, Phoenix, AZ
May 21-22 - Willamette Valley Folk Festival, Eugene, OR
May 28 - Boatnik Festival, Grants Pass, OR
June 10-11 - Bluegrass Festival, Kalamath Falls, OR
June 25 - Rooster Crow Festival, Rogue River, OR

HIGH STRUNG BAND (702) 673-0629 [Reno]

LOST HIGHWAY (714) 826-9928 [San Bernardino]

MOUNTAIN VIEW CLOGGERS (209) 688-8809 [Tulare]

NEW DONE GONE BAND (415) 661-3518 [San Carlos]

overlook mountain boys (408) 354-9359 [San Jose]

RAY PARK (916) 622-2494 [Placerville]

PICK OF THE LITTER (415) 526-2720 [Bay Area]

PORK RIDGE RANGERS (415) 747-0812 [South Bay]
2nd Saturday of each month - Saint Michaels Alley,
Corner of Homer & Emerson, Palo Alto.

RYE GRASS STRING BAND (503) 938-7403 [Milton-Freewater, OR]

ROGUE VALLEY BLUEGRASS BOYS (503) 826-4927 [Medford, OR]

sawtooth mountain boys (503) 838-4095 [Monmouth, OR]

SIDESADDLE (415) 969-2189 [San Jose]
Fridays & Saturdays - The Mother Lode, Cupertino
May 1 - New Varsity Theater, Palo Alto
May 4 - The Cellar, Los Altos
May 8 - Blossom Festival, Saratoga
May 21-22 - Laguna Seca Bluegrass Festival, Salinas
May 28 - Danville Hotel, Danville

SPRING MOUNTAIN HARMONY (209) 784-8268 [Porterville]

Fridays - Shingle Mill Restaurant, Springville
May 20-22 - Laguna Seca Bluegrass Festival, Salinas
June 11 - Ramsey's Bluegrass Festival, Porterville

SUNNY SOUTH (503) 281-9901 [Portland, OR]
June 17-19 - Grass Valley Summer Bluegrass Festival

SWINGADEROS (415) 886-1205 [Hayward]

A TOUCH OF GRASS (415) 962-8341 [Sunnyvale]
May 1 - New Varsity Theater, Palo Alto
May 21 - Palms Public Playhouse, Davis, CA
Sept 2-3-4 - Fall Grass Valley Bluegrass Festival

FRANK WAKEFIELD [San Francisco]
May 7 - Freight & Salvage
May 20-21 - Laguna Seca Bluegrass Festival (See
Special Events Listing for details)

WESTERN PACIFIC (408) 427-3531 [Santa Cruz]
Sept. 2-3-4 - Fall Grass Valley Bluegrass Festival

BILL WHITE (415) 530-7192 [Oakland]

VERN WILLIAMS BAND (209) 722-1357 [Valley Springs]

WINTERING SOUTH (503) 276-0640 [Pendleton, OR]

CBA member Becky Blackley will be assisting the International Autoharp Championships at the 12th Annual National Flat-Picking Championship Festival at the Winifield, Kansas Fairgrounds on Sept. 15-18.

The McLain Family Band joined the Oakland Symphony for a "Pops" season finale on April 8. The band played Phillip Rhodes' *Concerto for Bluegrass Band and Orchestra*.

The McLain Family played several bay area dates and also played at Norco before leaving the state.

Clogging - A personal view of the fun!

by Oscar Erickson



All photographs are of the Foggy Mountain Cloggers and were taken at the 1982 Summer and Fall Grass Valley Bluegrass Festivals. The Cloggers will be on the bill for both festivals in 1983. *Photos by Pete Wise.*

Why a personal view you might ask? Because I am not a dance scholar, the only thing that I'm qualified to do is narration on my experiences and readings concerning that singular American dance form "clogging". Let's warm up with a question and answer section where I ask the questions and then answer them. (How can I go wrong!)

Q How did I get started clogging?

A Well golly, because they cancelled the Greek folk dance class.

Q How long have I been clogging?

A Eight plus years.

Q Eight plus years, how much longer can I make it?

A Depends on the Good Lord and my poor old legs.

Q Don't I get tired of practicing?

A Sure, some days it's a pain but many times it's a great revitalizer after a miserable or draggy day.

Q Do I still like to perform?

A Goodness yes, all hams do. Frankly, I still get nervous before all of our shows, probably more so than the other Foggy members

Q Speaking of Foggy, how long have the Foggy Mountain Cloggers been in existence?

A The original group (of which we still have six dancers) started in March, 1977, doing a mini-fund raiser for the CBA. We had all danced together in another group but Foggy was a spin-off developed to dance to live music.

Q How about the costumes?

A Right! But you sure won't find me wearing red pants or yellow coveralls at the office. (Really it's just another aspect of being a ham).

Q Where do I like to perform?

A That's a three part answer. In front of a (1) lively, (2)



friendly, (3) interested audience. It helps to have a good wooden floor and it's bad news without steady, right-on music (always have that at CBA affairs) but the audience makes or breaks a performance. When the audience is alive their energy flows right up to us and gives us that lift and desire to produce the best we're capable of. I'm sure this can happen to any performer but I know it's true for Foggy and boy is that fun.

Q Surely there must be something you don't like about clogging?

A For me personally, I don't like the fact that I started at a more "mature" age and not having enough time to learn more about all the clogging styles from around the country. I think it's time to quit indulging myself and leave the Q and A section with one last question I don't hear anymore. That is "what the heck (sometimes he____) is clogging?" As more people participate country wide, and as groups are seen more on T.V., there is much greater public awareness of this dance form. it has been great fun to be in on the growth.

This is too short an article (and my knowledge too limited) to give a comprehensive historical background of clogging. Summarily, the main U.S. area of development was the Appalachian Mountain Region. This area was heavily settled with immigrants from England, Ireland and Scotland, who brought their native dances. The English Running Set, the Irish Step Dance and the Scottish Sword Dance all contributed steps and styles. The Black slave influence on the Eastern Seaboard added chugs, shuffles and more body movement. In the thirties there arose clogging teams that danced precision Style, all the dancers doing the sme step at the same time, as constasted to Mountain or Freestyle clogging teams where everybody did their own thing. There were many more influences than these few mentioned and like any "simple folk art" the more you search the more you find in the way of a rich and complex history. I think it's fun just to hear some of the names used for styles in various parts of the country at different times. Here are a few to savor.

East Texas Breakdown Cumberland Jig Buck Dancing

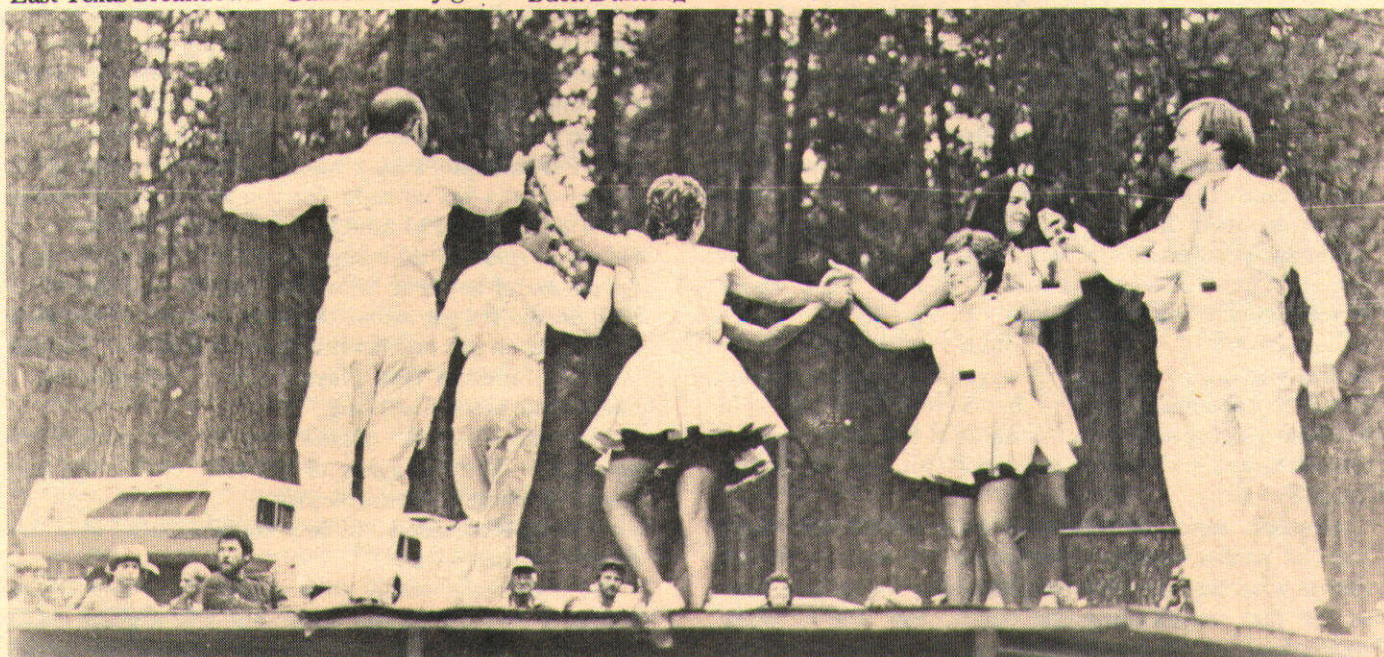


Everglade Stomp
St. Louis Hoedown
Surefooting

Flatfooting
Missouri Stomp
Smokey Mountain clog

I also believe that there is a California Style evolving right now. (Hard to be a traditionalist in California, right?) Foggy is doing its part in this evolution because we throw in ideas from wherever we can.

That finishes a once-over-lightly from my point of view. When you run into me at one of our events come and talk about clogging. I'm always looking to learn more and perhaps I can give you a little direction as to where you can find more information. In any case, the Foggy Mountain Cloggers invite you to give clogging a try. It's a lot of good clean, sweaty fun and you get to meet the "cwaziest" people that way.



The P's and Q's of Parking Lot Picking simplified

(Editor's Note: Amy Peterbilt is a well-known expert in the field of bluegrass etiquette. Her celebrated column, "Ask Amy," has appeared in several major bluegrass publications including "Bluegrass Uninhibited" and "Drummer's Weekly." She has graciously agreed to allow the "Bluegrass Breakdown" to reprint selected excerpts from her recently published manual entitled **The Complete Handbook of Bluegrass Etiquette** which is available at better hardware stores everywhere.)

I am often asked questions like, "How come every time I join a jam session, everybody stops playing and walks away?" or "How do I get everyone to end the song?" SOMETIMES I think my arm is going to fall off...."

Parking lot picking is an art, and a very difficult art to master. Beginners can be especially annoying to the seasoned pro, and should take great care to be as inconspicuous as possible. On the other hand, a seasoned pro can be very intimidating to a beginner, and experienced pickers.

Here are some tips for beginning pickers. First, always make certain that your capo is on the proper fret. If you play the guitar, check another guitar player's capo. If you play the banjo, check another banjo player's capo. (If you play the bass, mandolin or fiddle, however, never use a capo in the proper position. If you should miscalculate and position the capo on the wrong fret, the jam session will break up and walk away from you.

The jamming pickers will each take turns playing a break, and this normally works in a circular pattern, much like playing bridge, although the direction may be either clockwise or counter-clockwise. If a musician should catch your eye and say, "Take a break," this means it is your turn to solo on your instrument, and you should immediately begin to do so. This is **not** your cue to set down your instrument and light a cigarette or open a can of beer. Other terminology used may include, "Yawawn-wun?" Or, a picker may merely point his chin in your general direction and say nothing, thus indicating that you're next in line for a break. If you do not wish to take a break, notify the next person that you are going to pass your turn, and do so well in advance rather than just chickening out at the last moment.

If you're new to parking lot picking, you will, of course, want to appear to be experienced. Keep your ears open and be ready to converse intelligently with fellow pickers. Listen to their lingo. Practice their unusual accent whenever possible—in your tent, behind a tree, in the porta-potty, etc. It's always safe to drawl, "How about kicking it off with a turnaround?" or "Nice RB," or "That's a three-banger in A, ain't it?" And if you like to be the life of the party, just imagine how you'll impress everyone when it occasionally happens that there are two pickers in the same picking session by the name of Bill, and you crop up and say, "Hey, there's only room for **one** Bill in this band."

Once the standard fiddle tunes are out of the way, there may be pauses between songs while the various pickers decide what they are going to play next. If you have been at the jam session since the outset, feel free to make suggestions, as you can be sure that the song you request

has not yet been played by this particular group. However, when making suggestions, keep in mind that tunes like "Rocky Top" and "Orange Blossom Special" are considered gauche at parking lot picking sessions. Also, obscure and complex tunes such as "Plastic Banana" should be ruled out in most cases, as should the keys of E-sharp and F-flat because many bluegrass instruments do not come factory-equipped with these keys.

As the picking progresses, you will notice many more musicians arriving, especially if the bass player is able to keep a steady rhythm. You may soon find yourself jamming with a dozen or more musicians, most of whom will be playing guitar or banjo. If you play the bass and you wish to join in such a jam session, you should discreetly ask a few of the musicians to follow you to a nearby location, rather than adding another bass. Two basses at one picking session is out of the question. Two of any other instrument (except saxophones) is fine.

It is always best to try and divide up the picking sessions to a reasonable number of musicians. Otherwise, if each musician is afforded two breaks on, for example, "Soldier's Joy," you may find yourself playing the same song for hours waiting for your second break with no end in sight. Someone must always take the initiative to wrap up a song when it appears that the musicians are tiring. Watch for signs of fatigue such as bleeding fingers, sleeping fiddlers, or collapsing banjo players. At the first such sign, shout, "Lasswun!" and listen carefully for a tag ending. If no tag ending is forthcoming, either step into the middle of the circle and play one yourself (open your eyes very wide, nod your head up and down wildly, and attempt to obtain eye contact with each musician while you are doing this), or sing an ending in a very loud voice. then stop playing. The others should follow suit shortly. If not, walk away.

More advanced musicians should take care to be kind to obvious beginners. If they play miserably but seem to be having a good time, try surreptitiously to stuff a pillow or other soft material into their F-holes, or tap them on the shoulder and say, "Look up there," and place a mute on their instrument while they're looking up there. An unkind word to a first-time picker could bring an abrupt and unfortunate end to his or her musical endeavors forever. And try to assist the newcomers in any way you can. For example, keep a watchful eye on a fledgling banjo player who has no capo, for you may save his eyesight when he attempts to tune his banjo up to the key of B. Gently suggest to that beginning fiddler that his music would sound better if he would use the hair side of the bow on the strings rather than the wood (or vice versa, depending on just how awfully he or she plays). Tactfully tell that faltering bass player, "Hey, pal—either buy a metronome or sell that thing."

Bluegrass etiquette doesn't stop at the parking lot, however. Here are a few of the most commonly asked questions about bluegrass etiquette:

--"What is considered to be acceptable attire at an outdoor, three-day festival?"

Festivals are generally quite casual. It is therefore unnecessary to pack formal wear, but it is a good idea to bring along at least one Sunday-go-to-meetin' ensemble to

be worn at the gospel show on Sunday morning. It is also suggested that ladies discreetly carry an extra pair of panty hose in their handbags, as lawn chair, pine needles, and stumbling infants have a tendency to run even the sturdiest of support hose.

Color coordination is a must. You should never, for example, wear a pink chenille bathrobe with blue curlers. It is quite proper, however, to wear neutral-toned slippers (white after Easter and black after Labor Day) with any color bathrobe, as long as the curlers match the robe.

Of course, T-shirts and jeans are the standard mid-day attire, and although I find such an outfit disgusting, I cannot stand alone against the wave of popular opinion. So, some definite rules are in order if jeans and T-shirts are to be worn tastefully and properly.

Never never wear a T-shirt depicting any of the following subject matter: video games, rock and roll musicians, non-premium beers (anything under \$2.79 a six-pack is out), and obscenity, such as "Bluegrass Musicians Do It On the Ground In Tents." Very poor taste.

As for the jeans, I highly recommend my sister Gloria's personal line of Peterbilt jeans which feature special PeterPockets for strings, capos and the like. They are 100% polyester and come in a rainbow of earthtones, and can be dry cleaned at better dry cleaners everywhere.

--*"How does one go about getting a good night's sleep at a bluegrass festival without running off late-night pickers with a shotgun?"*

Normally, this is done by getting half a good night's sleep on Friday night and the other half on Saturday night. However, there are those who do require eight hours of sleep both nights, and since, as we all know, it is flagrantly gauche to stay in a motel or a self-contained Winnebago, here are some tips.

Obtain a Medic-alert bracelet which says "Insomniac" on it and wear it on your left wrist upon entering the festival. In this manner the gate personnel will be alerted to your problem and can direct you to a quieter campsite at the outskirts of the campground.

Unfortunately, all campsites are subject to nocturnal invasion by roving bands of inebriated pickers, and should this occur, keep in mind that it is very bad manners to yell "Shut Up!" from inside your tent. It is much better to play a tape of a crying baby instead. If this doesn't work, you might try panting loudly while suggestively rocking your tent back and forth.

--*"I want to be in Bill Monroe's band when I grow up, so I always take a tape recorder with me to jam sessions so I can study up on the music. But I notice that as soon as I come near the musicians with a tape recorder, they stop playing and walk away. How come?"*

The reason the musicians stop playing and walk away is probably because you are unskilled in proper microphone placement. You see, if you point the microphone directly at a musician's nose, he or she is apt to be unable to see and breathe, and will thus stop playing and singing. Also, if you lean the microphone against a guitar player's bridge, for example, you may actually be impairing the musician's ability to find the strings. You should also take care when crawling through a musician's legs that you do not get your hair entangled in his or her peghead. If you follow all

these points, you should find most musicians quite amenable to being tape recorded.

--*"Is it proper to use a guitar case for an outdoor cocktail table?"*

Certainly not, unless it is your own guitar case and suitable coasters are used. It is also very poor etiquette to use the top of an ice chest for this purpose. Placing a beer on top of an ice chest makes removal of more beer very difficult, especially if removal must be performed with one hand because the other hand is needed to support an instrument. All too often frustrated and thirsty musicians lift the ice chest lid without first removing the beer cans on top, resulting in unsightly wet spots on the ground.

Also keep in mind that vehicles are not occasional pieces. Leaving beer cans or wine glasses on the hood of a vehicle can ruin the finish. Vehicles are also not to be leaned on or sat upon, for once this happens, up to a dozen musicians may avail themselves of the hood, the fenders, and even the roof. And I don't need to tell you what the end pin of a bass fiddle can do to a paint job.

There are many, many more rules and guidelines to follow, but I'm afraid you'll just have to buy my new book if you are serious about bluegrass etiquette.

CLASSIFIEDS

Musical Instruments, Clocks, Guitars, Banjos, Mandolins, Fiddles. Send \$1.00 for catalog to Gilbert's Music - 37070 Fremont Blvd., #114, Fremont, CA 94536.

1928 Gibson 40 hole arch-top banjo, conversion 5-string neck. Gibson case \$1500. Noel (415) 567-0718.

1937 Gibson RB-1 Banjo for sale. \$1200. - Call Barbara (415) 726-6442.

Advertising Rates

Current rates for placing an advertisement in the **Bluegrass Breakdown** are as follows:

Full Page -- \$80.00

Half Page -- \$50.00

Quarter Page -- \$30.00

Business Card -- \$15.00

The size of the image area for a full page ad is 7 1/4 by 9 3/4; half page - 5 by 7 1/2; quarter page 3 1/2 by 5. Art work should be very clear black and white layout and all photos should be screened.

The current rates for classified ads are based on 3 1/2 inches of typed copy and are as follows: \$3.00 for the first three lines and 50¢ for each additional line. Make checks payable to the California Bluegrass Association and send check and ad to:

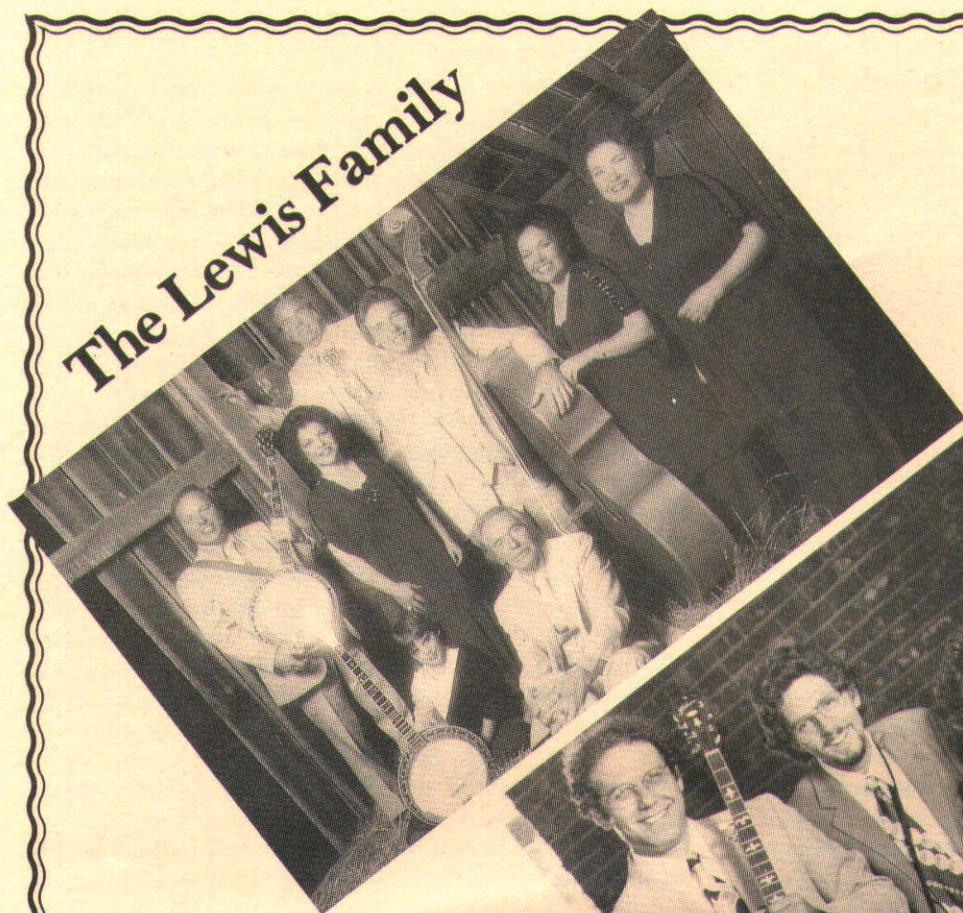
Don Powell

Bluegrass Breakdown Editor

735 College Street

Woodland, CA 95695

The Lewis Family



Hot Rize



8th Grass Valley Summer Bluegrass Festival

Sponsored by The California Bluegrass Association

Featuring:

The Lewis Family and Hot Rize

Country Ham ★ Heartland ★ High Country ★ Good Ol' Persons ★ Gryphon Quintet ★ Grant St. String Band ★ Motherless Children ★ Possom Trot ★ Shadow Mountain Sunny South ★ Foggy Mountain Cloggers

Friday, Saturday & Sunday, June 17, 18, 19

TICKET INFORMATION

General Public Adult tickets and ALL single day tickets are sold at



Charge by Phone
(415) 835-4342 -
(408) 297-7552 - (916) 443-2118

TICKETRON® TELE-TRON®
(415) 974-6391



| | Friday only | Saturday only | Sunday only | Friday & Sat. | Saturday & Sun | 3-Day at gate | 3-Day advance |
|------------------|----------------|------------------|----------------|------------------|-------------------|------------------|------------------|
| CBA member adult | \$7.00 | \$10.00 | \$8.00 | \$17.00 | \$18.00 | \$25.00 | \$15.00 |
| General Public | | | | | | | |
| Adult | \$7.00 | \$10.00 | \$8.00 | \$17.00 | \$18.00 | \$25.00 | \$20.00 |
| Under 12 | ***** | ***** | ***** | ***** | ***** | ***** | ***** |

✓ NOTE THAT DISCOUNTS ARE AVAILABLE ONLY ON 3-DAY ADVANCE TICKETS ✓
Tickets also available at San Francisco and Berkeley Fifth String Stores

CBA members buying 3-day tickets and CBA member seniors (over 65) and juniors (under 12) should order tickets from the address below. Make check or money order to California Bluegrass Association

Mike Johnson - 9025 Alcosta Blvd., #233, San Ramon, CA 94583 (415) 828-1389

PLEASE INCLUDE A STAMPED, SELF-ADDRESSED ENVELOPE - Deadline for mail-order tickets is June 6
NO TICKETS WILL BE HELD AT THE GATE.

No Dogs Will Be Permitted at the Festival
Advance Tickets: Limited Tickets available

CAMPING: Camping in the rough; there is no additional charge for camping DURING the festival. Camping area opens at 5 p.m. Thursday. Camping Thursday night is \$5 payable at the gate.

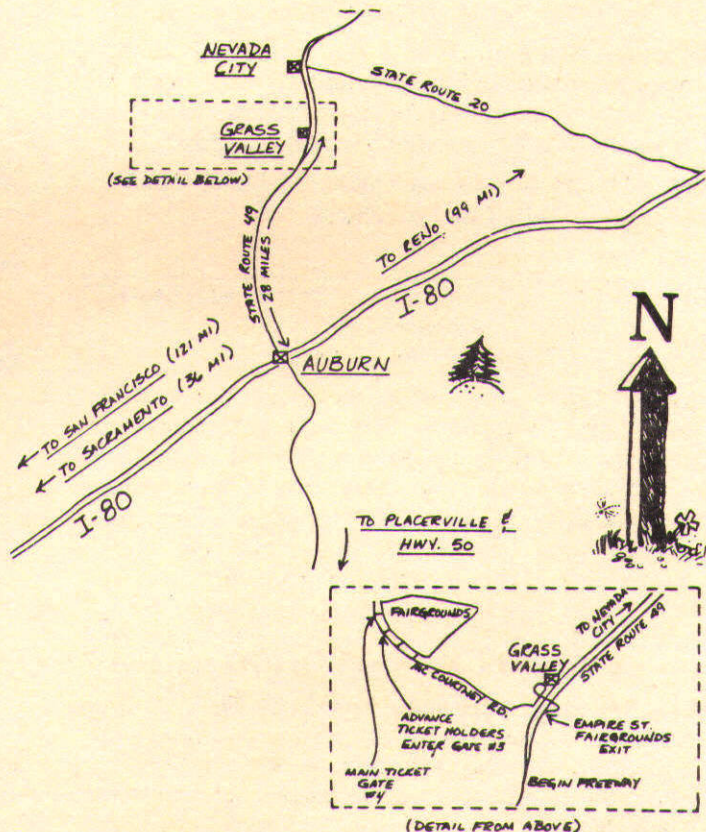
SEATING: On the ground. Bring blankets, lawn chairs, etc., if you wish.

FACILITIES: Rest rooms with sinks, plus portable facilities throughout the fairgrounds. Hotels and motels throughout the area - MAKE RESERVATIONS EARLY!!

FOOD: There will be food concessions at the festival, or you may prepare your own meals. (NO OPEN CAMPFIRE! Off-the-ground campstoves or hibachi-type cooking only!) There are also a number of good eating places close by in Nevada City and Grass Valley.

For additional information:
Don Powell (H) 916-662-2041 or (W) 916-662-2906
Mark Hogan 707-795-9471
Franchion Mason 415-828-9016

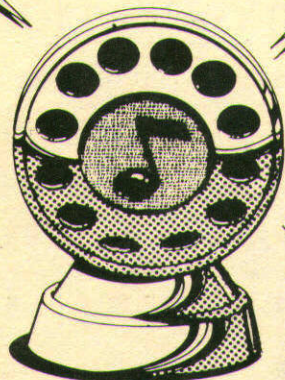
Music begins at 5 p.m. on Friday and 10 a.m. on Saturday and Sunday. Music ends at 10 p.m. on Friday, 11 p.m. on Saturday and 6 p.m. on Sunday.



FOLLOW THE FAIRGROUNDS
AND BLUEGRASS FESTIVAL
SIGNS!

Turn Your Radio On

Compiled by
Barbara Whitaker



If you know of any other radio shows on the west coast that would be of interest to our readers, please send as much information as possible--especially the name and address of the station--to:

Barbara Stein Whitaker
P.O. Box 882
El Granada, CA 94018

BAY AREA STATION

KCSM 91.1 FM Phone: (415) 574-6427
1700 West Hillsdale Blvd.
San Mateo, CA 94402

Sundays, 12 Noon-2 p.m.: *Bluegrass Music Festival of the United States*.

Sundays, 2-5 p.m.: *Bay Area Bluegrass* - A variety of Bluegrass music. The last Sunday of every month is devoted to old time and other forms of traditional music. Alternating hosts: Pete Lude & Barbara Whitaker. Dave Radlaur on the last Sunday of the month.

KPFA 94.1 FM Phone: (415) 848-6767
2207 Shattuck Ave.
Berkeley, CA 94704

Fridays, 2:30-4:30 p.m. *Pig in a Pen* with Ray Edlund. A fine presentation of bluegrass and old time music. On alternate Fridays: *Panhandle Country* with Tom Diamant--western swing, blues, and Bluegrass.

Sundays, 11 a.m.-1 p.m.: A variety of blues, Tex-Mex, Cajun, etc., with Chris Strachwitz.

KALW 91.7 FM Phone: (415) 648-1177
2905 21st Street
San Francisco, CA 94110

Saturdays, 3-5 p.m.: National Public Radio presents *A Prairie Home Companion*. This show is broadcast live from the World Trade Center in St. Paul, Minn. Garrison Keillor, a wild and crazy kind of guy, features good quality acoustic music [swing, old time, bluegrass, ragtime, etc.] in a format reminiscent of early radio shows. A very entertaining program.

KKUP 91.5 FM Phone: (408) 253-0303
P.O. Box 547
Cupertino, CA 95015

Mondays, 6-9 p.m.: Alternating Mondays - *The Quickstep* with Karen Quick and *Brother Glenn's Mostly Bluegrass Show* with Glenn Christensen.

Saturday, 3-6 p.m.: *High and Lonesome*, bluegrass with Rick Nagle.

Sundays, 9-12 p.m.: *Cupertino Barn Dance* with Stompin' Steve Hathaway--cowboy and country music.

Mondays (alternating) 10 p.m.-2 a.m.: *Indigeneous Folk music and old time Bluegrass* with Ed Cirimele.

Fourteen

STATIONS OUTSIDE THE BAY AREA

KAZU 90.3 FM Phone: (408) 375-3082
P.O. Box 206
Pacific Grove, CA 93950

Monday, 9-12 a.m.: *Monday Morning Folk Show* with J.T. Mason.

Tuesday, 9-12 a.m.: *Folk Music Around the World*

Wednesday, 9-12 a.m.: *Pickin' in the Wind* with Peter Figen

Fridays, 9-12 a.m.: *Singing Stone*--traditional and contemporary folk music with Rick Wolter.

KBOO 90.7 FM Phone: (503) 231-8032
20 S.E. 8th Avenue
Portland, Oregon 97214

Wednesday, 10 p.m.-1 a.m.: *Music From the True Vine*, Traditional and contemporary bluegrass. Alternating hosts are Jim Seafeldt, Dan Carter, Grant Farr, and Michael O'Rourke. On occasion, live bluegrass.

KCBX 90.1 FM Phone: (805) 541-1295
1026 Chorro Street
San Luis Obispo, CA 93401

Thursday, 8-10 p.m.: *Basically Bluegrass* with host Duane English.

KCVR 1570 AM Phone: (209) 368-0626
Box 600
Lodi, CA 95241

Saturday 11:45 a.m.: All gospel show with host Bill Robertson. Tune-in for outstanding music.

KDVS 91 FM Phone: (916) 752-0728
14 Lower Freeborn Hall, UC Davis
Davis, CA 95616

Saturdays, 9:15-12:15 a.m.: Saturday morning folk show featuring folk, bluegrass, country, and live music. Hosted by Pete Hellmuth, Rich Ellis, and Steven White.

KERG - Sterero FM 100 Telephone: (707) 923-2052
Box 7, Garberville, CA 95440

Sundays 2-4 p.m.: "The Bluegrass Show" with host Ron Stanley - bluegrass and bluegrass music

KHSU 90.5 FM Phone: (707) 826-4805
Humboldt State University

Arcata, CA 95521

Fridays, 9-12 a.m.: Bluegrass show

Thursdays, 10 p.m.-1 a.m.: Folk music with Doug the Jitterbug.

Tuesdays, 1-4 p.m.: Folk and international music with Doug the Jitterbug.

KKIO AM

Phone: (805) 963-5896

1919 State Street
Santa Barbara, CA

Daily - 7:40 - 8 a.m.: Bluegrass show with host Doug Toews

KNPR 89.5 FM

5151 Boulder Highway
Las Vegas, Nevada 89122

Sundays, 2-5 p.m.: *The Bluegrass Express* hosted by Don Lanning, Tom Flagg, Marty Warburton and Butch Baldassari of the Southern Nevada Bluegrass Society.

KLOO 106 FM

Phone (503) 753-4493

1221 S.W. 15th St.
Corvallis, Oregon

Sunday, 8:30-9: *Bluegrass Show*. They also play bluegrass in their regular format.

KQED 88.5 FM

Phone (415) 553-2129

500 8th Street
San Francisco

Saturday, 6 p.m.: A Prairie Home Companion.

KUOP 91.3 FM

3601 Pacific Ave., Stockton, CA 95211

Saturdays, 6-12 a.m.: Saturday morning folk and bluegrass with Michael Bryant.

Saturdays, 7-9 p.m.: *A Prairie Home Companion*--see KALW for description.

KUNR 88.7 FM

University of Nevada, Reno, Nevada

Saturdays, 3:05-5 p.m.: *Life's Other Side* with Mike Reed. Occasionally live performances of bluegrass and other acoustic music.

KUSP 88.9 FM 90.3 translator

Phone: (408) 476-2800

P.O. Box 423, Santa Cruz, CA 95061

Sundays 4-7 p.m.: *Down on the Pataphysical Farm* with Leigh Hill [acoustic country music]

KVMR 89.5 FM

Phone: (916) 265-9555

P.O. Box 328, Nevada City, CA 95959

Monday, alternate weeks, 1-3 p.m.: *Trail Mix* with Don Craddock

Wednesday, 8-9 p.m.: *Downhome Country* with Terry Meekins

Friday, 10-11 p.m.: *You Get What You Play For* with Paul Quackenbush

Saturday, alternate weeks, 10 a.m.-Noon: *The Bluegrass Show* with Tim Quackenbush

Saturday, Noon-2 p.m.: *Country Music* with T.J. & Annie

California Bluegrass Association Membership Application

Membership Number

No. of votes

For Office Use Only

Expiration Date

Last Name First Name

Address

City State ZIP

Telephone (include area code)

Spouse's Name

SINGLE - \$8.50

Children (Name & Birthday)

SPOUSE - \$2.50

AGE 16-18 (voting privileges)

CHILDREN-
age 16-18
(each) - \$2.50

UNDER 16 (nonvoting)

Under 16
(all) - \$1.00

CHECK IF:

New ☐ Renewal ☐

Subscription only ☐

SUBSCRIPTIONS
ONLY -

\$12.00 - Foreign boat
\$18.00 - Foreign-Air

Bands of 3 to 7 members may join at the CBA Band Rate.
Write for more information to the address below.

Send check or money order for membership to:

Treasurer

California Bluegrass Association

P.O. Box 11287

San Francisco, CA 94101-7287

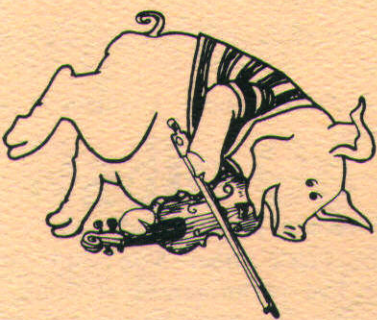
Instruments Played

Any Help you can offer the CBA
(artwork, typing, writing, promotion, etc.)

ENTER AMOUNT
ENCLOSED HERE:

BLUEGRASS BREAKDOWN
P.O. BOX 11287
SAN FRANCISCO, CA 94101-7287

Second Class Postage
U.S. POSTAGE PAID
San Francisco, California
and at additional
mailing offices
315350



TIME VALUE