

California Bluegrass Association

35th Anniversary

FATHER'S DAY BLUEGRASS FESTIVAL



Graphic: Steve Johnson

JUNE 17-20, 2010 · GRASS VALLEY, CA

CALIFORNIA BLUEGRASS ASSOCIATION



**2010
SOUVENIR
PROGRAM**

GOODTIME
Relax and Enjoy the Sound

A Great Goodtime banjo, with new "Crow" in peghead

The **NEW** Goodtime "Crow" Banjo Package

Package includes a strap, tuner, picks, the "Crow" CD, "Crow" tab book, & a Deering gig bag.

All of this would normally cost you over \$700
You can get all of this now for only \$549

DEERING
The Great American Banjo Company

www.deeringbanjos.com info@deeringbanjos.com
3733 Kenora Dr., Spring Valley, CA 91977
(800) 845-7791 • (619) 464-8252

The new look of the Deluxe.
Vintage style inlays with a touch of class.

The **NEW** Deluxe

DEERING
The Great American Banjo Company
3733 Kenora Drive, Spring Valley, CA 91977
(800) 845-7791 (619) 464-8252
www.deeringbanjos.com info@deeringbanjos.com

Learn more about the Deluxe at:
www.deeringbanjos.com/deluxe

DEERING
The Great American Banjo Company

The tone that makes your hot licks sizzle. Order yours today.

THE FATHER'S DAY BLUEGRASS FESTIVAL

Welcome!

The California Bluegrass Association welcomes you to our 35th Annual Father's Day Weekend Bluegrass Festival. We know that you will enjoy your weekend with us at the beautiful Nevada County Fairgrounds in Grass Valley, the Bluegrass Capital of California.

The California Bluegrass Association is a non-profit, all volunteer organization, founded in 1974, to preserve and promote Bluegrass, Old Time, and Gospel Music in California. We encourage you to visit our Membership Booth and learn the benefits of membership. We presently have over 3000 voting members in California and thirty-nine other states and Canada. We hope you will join or renew your membership at the membership booth in the inner fairgrounds. Make this "your" organization and learn about the many membership benefits.

The Father's Day Bluegrass Festival is produced by our volunteer members and promises four days of fabulous music on three stages, jamming, workshops, Youth Programs, Kids on Bluegrass, Luthier's Pavilion, Vern's Beer and Wine Garden and a large concession area with food, drink and crafts.

General Information: Camping

Camping is in the rough on the festival site and those who come early may camp Sunday through Wednesday, June 13th-16th for a fee of \$15/tent and \$20/RV on a first come, first served basis. Designated tent-only camping is available (see map or ask at gate). "Full Hookup" and "Electric-only" RV camping reservations began early in the year and are sold out for 2010. Electric-only sites go on sale the 1st of November. Full hookup sites are much in demand and reservations are through a lottery. Check the Bluegrass Breakdown or www.cbaontheweb.org in September 2010 for details about the lottery for 2011 FDF full hookup sites.

Handicapped Camping

There are a limited number of special accommodation camping spaces available for those with handicaps. Advance reservations were required by May 1, 2010. However, handicapped campers will be accommodated if possible. We cannot promise sites with hookups and/or a view of the stage; however, we will do our best to meet your basic needs. Volunteer John Skaar is in charge of Handicapped Camping and can be reached at 509-427-8928 or skaarjohn@gmail.com. Volunteer George Calhoun will provide some transportation in a golf cart this year for those with special needs. Information about this service will

be available at the Gate or at Festival Headquarters.

Helpful Information

Bring regular lawn chairs or blankets for seating. Seating is strictly "bring your own" and chair height must be lower than 37". Anyone may sit in an empty chair until that chair is reclaimed by its owner.

Food and drink concessions are on site and food and non-alcoholic beverages may be brought into the audience area (no glass allowed) in picnic baskets or coolers.

Historic Grass Valley and Nevada City are a short automobile drive away and offer banking, restaurants, grocery shopping, camping-supply purchases and tourist and recreational opportunities.

The weather can be hot during the days and cool during the evenings, so dress appropriately. Sunscreen and hats or visors help keep you from burning during the heat of the day and a jacket or sweater can be very comforting during the evening performances and for jamming afterward. The Festival will be held rain or shine and there are no refunds.

Bring your acoustic instruments and join in the fun. A large part of the enjoyment of our festival is the spontaneous jam sessions that spring up throughout the fairgrounds during the festival. There is a wonderful opportunity to share some music and make new friends. (Remember your jamming etiquette.)

Parents are responsible for their children at all times. Please be sure you know where your children are and what they are doing. There is an organized children's program with schedule times listed in the program; however, this is not a day care service. Parents must either remain with their child/children or return to pick them up at the conclusion of the program and at lunch breaks. Children will be signed in and out. For older kids there is a Teen Hangout with a program of events and activities listed in the program.

The Festival is produced by volunteers and we ask for your cooperation in abiding by the rules which are a necessary part of such a large event. The California Bluegrass Association Board of Directors and volunteer festival personnel have thought out these rules carefully in order to ensure your safety and satisfaction.

Please read the following rules and regulations carefully, and give us your full cooperation. If everyone follows these simple guidelines, we can all enjoy our festival days together in harmony, and listen to some wonderful music!

Rules and Regulations

In order to facilitate the enjoyment of the California Bluegrass Association's 35th Annual Festival, the following rules and regulations will be in effect during the Festival.

- DO NOT REMOVE YOUR ID BAND** - Your ticket entitles you to enter the fairgrounds and participate in all musical performances on the date or dates covered by the ticket. Camping fees are included in all three and four-day tickets. You will be banded when your ticket is taken at the front gate. No replacements will be made unless you purchase another ticket. All festival attendees need to be banded. Security personnel will be checking for ID bands and will ask unbanded persons to leave the fairgrounds or purchase a ticket.
- NO ALCOHOL** or display of public drunkenness and disturbance is permitted in the audience area. Persons who interfere with the enjoyment of the rest of the audience will be asked to leave the area.
- NO ILLEGAL DRUG USE** will be permitted on the site. Anyone caught using illegal drugs will be required to leave the fairgrounds for the balance of the festival.
- NO DUMPING TRASH ON THE GROUNDS.** Help maintain the cleanliness of the grounds and restrooms. Deposit all trash in available bins and recyclable containers in appropriate bins. Do not move the trash barrels. If you need an additional container in your camping area, please ask one of the grounds crew or come to Festival Headquarters and ask for one.
- NO LOUD RADIOS OR TAPE PLAYERS** are permitted.
- NO AMPLIFIERS OR ELECTRIC INSTRUMENTS** are allowed in the camping areas.
- SCOOTER OR SKATEBOARD RIDING AND ROLLER-BLADING OR SKATING** are prohibited on the festival grounds from Thursday morning at 8:00 a.m. until Sunday after the music on stage stops, and at all times on the inner fairgrounds.
- BICYCLE RIDING** -- Is allowed in the campground area but not in the inner Fairground. Children are required to wear helmets in accordance with California State law.
- MOTORCYCLES** - Only California Street Legal motorcycles are allowed on the fairgrounds.
- NO GOLF CARTS OR ATVs** — The only allowable golf carts on the fairgrounds will be OFFICIAL FESTIVAL VEHICLES. All other golf carts and ATVs (except those used by Gold Country Security) are prohibited on the festival grounds from Monday prior to the festival until Monday following the festival except for single per-

son battery operated vehicles used by the handicapped or people with medical problems.

•**NO OPEN CAMPFIRES** - Keep a close watch on camp stoves, barbecues, lanterns, etc. Make sure they are completely out when not in use.

•**NO PETS** of any species (dogs, cats, birds, etc.) are allowed on the fairgrounds during the time that the CBA has possession of the grounds. There is an exception which allows cats in RVs and Trailers in the RV section only. Persons who bring pets onto the festival site (with the exception of the Cat Policy above) will be asked to take their animal to a kennel or leave. No refunds will be given on advance tickets.

•**NO ROPING OFF AREAS** - except by festival officials. Due to the large number of campers, "saving a spot" for a friend who is coming later is not allowed. If your group wants to be together, try to arrive about the same time.

•**NO SMOKING** in the audience seating area. Please be considerate of your fellow audience members and smoke around the perimeter or camping areas.

•**NO SOLICITING, DEMONSTRATIONS OR UNAUTHORIZED CONCESSIONS** - for a variety of reasons, including cleanliness of the fairgrounds, avoidance of congestion, security, crowd control, and the fulfillment of the CBA's contractual commitments, no ticket holder is authorized to sell merchandise or carry on any commercial enterprise at the festival without a concessionaire's permit obtained prior to the start of the festival in accordance with the rules and procedures of the CBA. No ticket holder is authorized to distribute or post literature, leaflets, flyers, circulate petitions, picket or carry signs, or set up booths or tables in connection therewith without the express written permission of the Board of Directors of the California Bluegrass Association obtained prior to the festival.

•**NO USING THE WATER DITCH** - through the fairgrounds for wading, drinking, washing, trash disposal, or any other purpose. This ditch is a part of the fresh water system for the town of Grass Valley.

•**VIDEO RECORDING OF ARTISTS' STAGE PERFORMANCES**

- is PROHIBITED unless specifically allowed and permission is indicated by a sign displayed near the stage stating that video recording is permitted. If permit-

ted, this permission applies only to the artist on stage at the time the sign is displayed. Persons who tape bands against their wishes will be asked to stop by security personnel. If they refuse, they will be asked to leave the fairgrounds.

•**AUDIO TAPING** directly through the sound system or the CBA's feed from there is prohibited unless written consent to do so has been obtained from the CBA Board of Directors prior to the festival.

•**SERVICE/SUPPORT ANIMALS** - In compliance with the federal Americans With Disabilities Act and the Unruh Civil Right Act (California Code sections 54-55.2), individuals with a service or support animal or persons who are licensed to train service or support animals are allowed to bring said animal to the festival. Service or support animals are expected to behave appropriately and unobtrusively as they assist their owners and while in common areas, it shall be on a leash, in a carrier, or otherwise under the direct control of the animal owner.

•**CONSERVE WATER AND ELECTRICITY** - Campers and RVs may draw electrical power only from designated outlets. Water faucets and connections are scarce and should be shared.

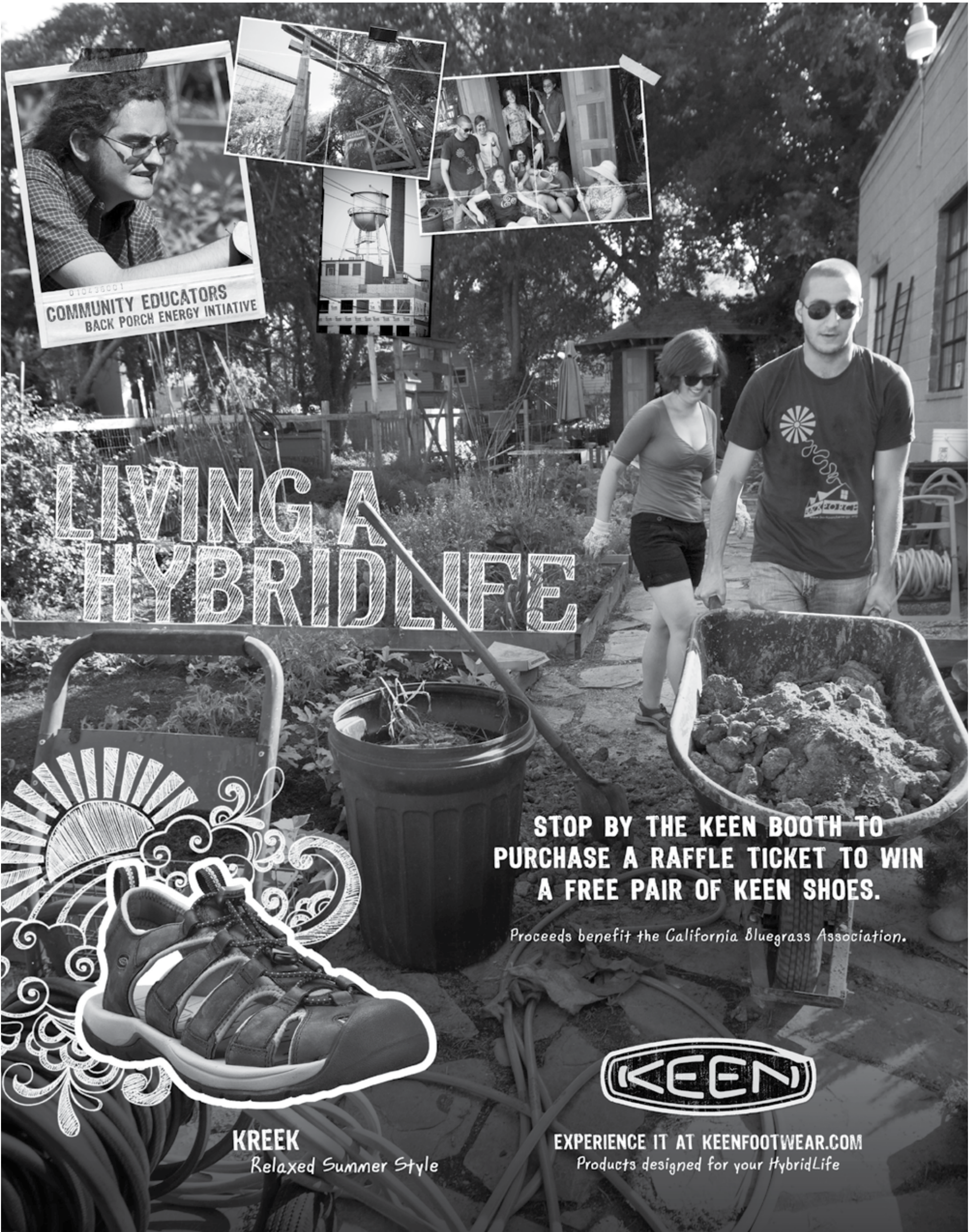
•**KEEP YOUR GENERATOR USE MINIMAL** - if you must run a generator on your RV to charge your battery or for any other reason, please keep the time minimal. Do not use your generator after 11 pm or before 8 am.

The California Bluegrass Association reserves the right to deny admission to anyone, and/or to have anyone removed from the fairgrounds if necessary or desirable at the discretion of the Festival Director or the CBA Board of Directors.

FOR FURTHER INFORMATION:

•**CALIFORNIA BLUEGRASS ASSOCIATION** - visit our festival website at www.fathersdayfestival.com or the CBA website at www.cbaontheweb.org for information about our association and the events we produce throughout the year. You can also request a sample copy of our monthly newspaper, Bluegrass Breakdown, at our Membership Booth.





LIVING A HYBRIDLIFE

STOP BY THE KEEN BOOTH TO PURCHASE A RAFFLE TICKET TO WIN A FREE PAIR OF KEEN SHOES.

Proceeds benefit the California Bluegrass Association.



KREEK
Relaxed Summer Style



EXPERIENCE IT AT KEENFOOTWEAR.COM
Products designed for your HybridLife

YOUR 2010 CBA FATHER'S DAY FESTIVAL ARTISTS

In alphabetical order

Anderson Family Bluegrass

The Anderson Family, from Grass Valley, Mark and Christy Anderson and their four kids, Paige, Aimee, Ethan (Bo) and Daisy, has been a popular crowd-pleasing northern California bluegrass band since their start in early 2005.

From the annual CBA Father's Day Bluegrass Festival to the IBMA convention in Nashville, the Anderson Family has won over audiences nationwide with a traditional bluegrass sound and a fresh, modern approach.

Paige is the lead and rhythm guitar player, lead singer and band emcee, Paige (born in 1994) has already attracted national attention for her musical prowess. She was featured in "Teen Scene" in Bluegrass Now-the magazine's editor called her "a remarkable talent"-and profiled in Flatpick Guitar Magazine. She also plays clawhammer

banjo and mandolin and is currently serving as the Teen Ambassador for the California Bluegrass Association.

Aimee (1996) decided to learn the fiddle after seeing someone play "Orange Blossom Special" at a festival in 2003. She also sings lead and harmony vocals, including a show-stopping duet with Paige on "Sounds of Loneliness". In addition to her fiddling, Aimee is currently studying the banjo and mandolin.

Ethan (1999), who also answers to the name "Bo", took up mandolin in 2004, inspired by the recordings of Bill Monroe and the picking of Paige and Aimee. Ethan is highly influenced by Ronnie McCoury in addition to Monroe, and he's well on his way to creating a bluesy, improvisational sound of his own. Like his sisters, he plays

more than one instrument and sings harmonies; he's recently started playing banjo and guitar.

With all three siblings playing an instrument, there was no way Daisy (2001) was going to be left out. Inspired by Aimee, Daisy started fiddling at age five, chopping out the rhythm with her bow and contributing vocal harmonies. She says the fiddle is her "main instrument", but she's started playing dobro recently and she plans to feature the resophonic guitar more in the future.

Bass player Christy was introduced to bluegrass by husband Mark and first started learning the dobro before she decided the bass was more to her liking. She's been playing bass since 2005. Christy's time is spent split between raising and schooling the kids, booking the band and working on the



Anderson Family Bluegrass.

band's music.

A native of Vermont who grew up in California, Mark was a member of a musical family. He played trumpet and French horn for several years, before turning to the banjo in 1999. Mark was changing careers then - from helicopter pilot to software engineer -- so music took

a back seat until Paige learning the guitar pushed him into more serious pursuit of the banjo in 2003. In addition to playing banjo with the group, Mark also engineered and produced the band's most recent CD, 'Anderson Family Bluegrass.'

Bluegrass Patriots

The Bluegrass Patriots from Colorado have faithfully represented the unbroken circle that is bluegrass for 30 years. But longevity is a reward reserved for those bands with the talent, drive, and class to sustain the highest levels of musicianship and entertainment. And like an old instrument, their sounds have grown sweeter through the years. Present as always in their show are the stunning lead and harmony vocals by all five members, the bluesy and punchy picking, well-penned originals, and folksy charm on stage.

Excepting the addition Dan Mitchell on fiddle and guitar in 2003, upon the too-soon passing of dobroist "Ranger" Rick Bradstreet, the Patriots have maintained the same lineup for the entire span

of their band's history. That's bluegrass patriotism, right there. The band responds with a collective shoulder shrug when asked how they've been able to keep the band together so long, as though they hadn't noticed. Mandolinist Willie McDonald says, "no one ever moved away." Guitarist Glenn Zankay adds, "More so than anything, what will keep any band together is to have success."

The success they've enjoyed has included six critically acclaimed recording projects, including releases on Copper Creek and Turquoise record labels. The band has toured all across the continent, from Alaska to Arizona, Nova Scotia to Florida. They've graced the covers of Bluegrass Unlimited and Banjo Newsletter. They've per-

formed for Senator John Glenn, as well as former president Gerald Ford. They've played festivals in Denmark, Ireland, Sweden and the British Isles, as well as most of the major festivals in the U.S., including Grass Valley, and the Minnesota Old-Time and Bluegrass festival, where they remain perennial crowd favorites.

The band originally came together as most bands do, just some guys wanting to pick a bit. It was in the late 1970's. Ken Seaman, banjo, had recently relocated to Fort Collins from Missouri and knew Danny Rogers, bass, from the weekly jam Danny held at his bar, the Town Pump. Willie McDonald, mandolin and Glenn Zankay, guitar, had already been playing in a bluegrass band that wanted to



Bluegrass Patriots

move to California, but Willie and Glenn did not. The initial blend of voices, instrumental firepower, and flair for great material proved to be a winning combination, capable of great sustain through the years. The newest member of the band,

Dan Mitchell had been a friend and pickin' partner of the Patriots for the last 25 years, in addition to playing with numerous other front-range bluegrass bands, including the late Charles Sawtelle's band, the Whippets.



Michael Cleveland and Flamekeeper

Michael Cleveland and Flamekeeper

Award-winning fiddler Michael Cleveland brings dynamic traditional bluegrass to the stage with his band, Flamekeeper, in a show that will leave the audience talking. A seven-time winner of the IBMA's Fiddle Performer of the Year award, Mike and his talented band present a program of tight vocal trios and duos, blistering instrumentals, and fiddle-and-banjo duets that echo the first-generation stars of bluegrass. The show is always full of fun.

Considered one of the premier bluegrass fiddlers of his generation, Mike picked up a fiddle at age four, and his talent was recognized early. In 1993 he was chosen to be part of the Bluegrass Youth All Stars at the IBMA's award show. Later that year

Mike made his Grand Ole Opry debut as a guest of Alison Krauss.

His list of guest appearances over the years is a who's who of bluegrass legends including Bill Monroe, Jim and Jesse, Ralph Stanley, Mac Wiseman, Doc Watson, Larry Sparks, Doyle Lawson, and J.D. Crowe, Dale Ann Bradley and Coon Creek. He joined Rhonda Vincent and The Rage in 2000.

Jesse Brock, vocals, mandolin has spent a lifetime in bluegrass, first with his family band, and later with acts such as The Lynn Morris Band. Jesse was an integral part of Mike's first Rounder album, "Flame Keeper."

Marshall Wilborn, vocals, bass is a native of Austin, Texas. Marshall has played with some of the great

bluegrass bands including Jimmy Martin, The Johnson Mountain Boys and The Lynn Morris Band. Marshall lives in Virginia with his wife Lynn Morris.

Tom Adams, vocals, guitar, is a bluegrass veteran on banjo and guitar. Tom debuted on the national scene with Jimmy Martin and has played with The Johnson Mountain Boys, Rhonda Vincent, Blue Highway, Dale Ann Bradley and Bill Emerson. Tom and his family live in Pennsylvania.

Jessie Baker, vocals, banjo, is not yet out of his teens but Jessie has already had plenty of experience in bluegrass, playing with Wildfire, The Wildwood Valley Boys, and Karl Shiflett. Jessie lives in Georgetown, Kentucky.

World class stringed instruments!

- ♦ Authorized dealers for Martin, Taylor, Gibson, Santa Cruz, Legend, Goodall, and Dobro guitars, Gibson mandolins & banjos, Goldtone banjos, Kentucky & Mid Missouri mandolins, violins and fiddles.
- ♦ Family owned and operated, providing one-on-one personalized service.
- ♦ Fully committed to supporting and promoting the local acoustic music community.
- ♦ Your one stop music store for sales, instruction, repairs, and resources.

One of our Featured Instruments

The Bluegrass General HD28-V

An HD-28V with pre-war style bridge, Adirondack top and bracing. This guitar has a very robust bass and very clean treble. A wonderful guitar for both rhythm and lead, the Adirondack spruce gives this guitar a sound you may have found from a brand new Martin guitar, in the 1940's, without the associated price tag of vintage instruments. Perfect for those players seeking a Tony Rice style tone. Comes with Geib style case.



**Come by our store and check out the selection of
fine instruments!**

**Open Jam Session Every Thursday evening
Check our website for upcoming concerts featuring
nationally touring and local Bluegrass Bands**



**At the corner of Alhambra & J
Sacramento, California**

916-442-8282

questions@thefifthstring.com

www.thefifthstring.com

G2

The name G2 stands for generation two. Each member of the band has a father or uncle who plays bluegrass and country music, making them the second generation of Swedish bluegrass musicians. When they played together for the first time Christoffer Olsson, Jens Koch, Erik Igelström, Tobias Strömberg, and Jimmy Sunnebrandt realized almost instantly that they had something special.

The band's first CD, *Where the Tall Grass Grows*, was widely acclaimed by critics and fans alike.

G2 won the #1 European Bluegrass Band title in 2007. They have already toured in America, playing festivals such as Bean Blossom, ROMP, and the IBMA Fan Fest.

The next couple of years are shaping up to be big for the band.

2010 will see an extended U.S. tour. Crowds, especially younger folks, are drawn to G2's contagious enthusiasm, prodigious talent, and overwhelming joy for playing the music. They are breaking new ground as a European band in America and the world is watching.

Christoffer is G2's prolific songwriter and lead singer. Since the age of seven he has written songs in English because, he says, "You can't rhyme in Swedish!" His compositions capture the essence of modern bluegrass and his guitar playing drives the band's rhythm.

Erik grew up playing folk and country on the guitar, taking after his dad. The movie *O Brother Where Art Thou* sparked his interest in bluegrass and the mandolin. When he finally got the instrument

in his hands, it felt like it was always meant to be there.

Jens got his first banjo from his uncle for Christmas at age twelve. Although it was difficult getting started on the banjo in Sweden, he listened a lot and made a couple of trips to the U.S. while learning. His playing is straight-ahead traditional Scruggs-style and just from listening one might guess he'd been born in North Carolina.

Tobias grew up hearing his banjo-playing dad sing "Sunny Side of the Mountain" while they herded sheep, but he played mostly punk rock until about ten years ago when he almost accidentally slipped into bluegrass from the rockabilly he and his friends were playing. He heard the dobro for the first time at a festival in Sweden and he was hooked.



G2 is from Sweden.

Jimmy has played the fiddle since he was little. He played bass in a bluegrass band with his dad and studied and played everything from classical to jazz to hard rock

while in school. His solid bass playing establishes the foundation of the band's rhythm and his harmony vocals form a tight seamless blend.

High Country



High Country.

Over the last forty years, High Country has earned its place as the West Coast's premier traditional bluegrass band. Strongly influenced by the classic styles of Bill Monroe, Flatt & Scruggs and the Stanley Brothers, the band's blend of banjo, mandolin, fiddle, dobro, guitar and bass delivers the upbeat excitement of true bluegrass music.

With driving rhythm, skillful picking and soulful singing, High Country brings the energy and experience of six seasoned professionals to this spirited American art form. After four decades of performing, the band remains fresh and exciting, bringing their love of traditional bluegrass music to an ever-widening audience.

Butch Waller is High Country's leader and emcee. Butch was one of the first to play professional bluegrass in Northern California and formed the band in 1968. His distinct mandolin playing, firmly grounded in the Monroe style, shines through strong bluesy downstrokes and vibrant tremolos. Butch sings lead and baritone and also contributes many of the band's

original songs and mandolin instrumentals.

Larry Cohea has been with the group from nearly the beginning. His genuine enthusiasm for music and life pervades his energetic banjo work, which spurs the band's hard-driving sound. Larry's dedication to the banjo and bluegrass began when, as a kid, he watched the daily telecast of the Flatt and Scruggs show at his home in Springfield, Tennessee. He is featured on lead and tenor vocals.

Jim Mintun is a welcome addition wherever bluegrass players convene as he brings with him a vast repertoire of songs, along with a soaring bluegrass voice of the high lonesome variety, singing either the lead or tenor part with equal vigor. Jim's gritty, zestful approach to the dobro never ceases to delight audiences, and his song writing is a key ingredient in the band's personalized stamp on the genre.

Tom Bekeny, High Country's fiddle player, is well known to many bluegrass enthusiasts for his mandolin work with a number of California bands. As a fiddler, Tom's powerful bowing and in-

spired interpretations of traditional fiddle solos explode with bluegrass sentiment. Occasionally Tom will line up with Butch for some dazzling mandolin duets that leave the stage smoking. Tom is also a talented and heartfelt singer in his own right, at home with any part, including bass on the gospel quartets.

Glenn Dauphin anchors the band with his solid, dynamic bass playing and inspired singing. Glenn is possessed of a clear, soulful bluegrass voice and ably handles the lead, tenor or baritone part with equal enthusiasm. He is also a songwriter of high regard and his finely crafted compositions are a lively addition to High Country's repertoire.

Bob Waller, rock solid guitarist, lead and tenor singer, and Butch's younger brother, is a veteran bluegrass player, having cut his teeth with a number of groups both in the Bay Area and in Seattle. Bob and Butch zero in on the close harmony sound that is the gift of siblings, and is reminiscent of the brother duets of bluegrass and country music past and present.

Infamous Stringdusters

The Infamous Stringdusters emerged in 2007 with the acclaimed album, *Fork in the Road* on Sugar Hill Records. The various members of the band all have résumés that include numerous notables that they've worked with in the past. The band's current lineup features: Andy Hall (Dobro), Andy Falco (guitar), Chris Pandolfi (banjo), Jeremy Garrett (fiddle), Jesse Cobb (mandolin), and Travis Book (upright bass).[1] Falco is the newest member, filling the role vacated by guitarist Chris Eldridge (son of

Ben Eldridge and later a touring partner with Chris Thile).

The Infamous Stringdusters won three awards at the International Bluegrass Music Association Awards Ceremony in October 2007. They came away with the award for Emerging Artist of the Year, Album of the Year for *Fork in the Road* (in a tie with J.D. Crowe & the New South's album *Lefty's Old Guitar*), and Song of the Year for the album's title cut.

The band is celebrating their brand new release, *Things that Fly*.



The Infamous Stringdusters.



Find out more about CBA
Music Camp
cbamusiccamp.org

The Kathy Kallick Band

The Kathy Kallick Band is equally at home at a bluegrass festival, kids show, and folk concert, and band members are experienced at leading workshops and teaching as well as performing. All the musicians in the Kathy Kallick Band are experienced, magnetic performers, and their presentations are as engaging as they are memorable, always based in hot bluegrass & cool originals.

There is a tendency to think of West Coast bluegrass as being softer, jazzier, and somehow "other" than traditional. This can be the case, but there is also a school of bluegrass in Northern California which has, from the beginning, been steeped in Monroe-based tradition—as well as welcoming to women and original songs.



The Kathy Kallick Band.

Kathy Kallick has been leading bands in this traditional brand of West Coast bluegrass since 1975. She continues to evolve as one of the music's extraordinary composers and vocalists, releasing 14 albums (which include over 100 of her original songs), and receiving a "Lifetime Achievement Award" from the California Bluegrass Association.

Annie Staninec (fiddle) has been playing gigs for half of her 22 years, beginning with the award-winning Donner Mountain and Lost Coast and the old time band, All Wrecked Up. She's guested with Darol Anger's Republic of Strings, played with David Grisman's Gypsy Caravan, won the 2008 and 2009 Fiddle Player of the Year awards from the Northern California Bluegrass Society, as well as the 2006 Outstanding Young Musician award at Django-fest Northwest. Her collaboration with the KKB showcases her fiery soloing (think Scotty Stoneman meets Benny Martin), and gives her the chance to express lyrical, sensitive backup and charming singing.

Tom Bekeny (mandolin), who has been playing and singing with

Kathy since 1996, is among the most adventurous mandolinists in the music, creating thrilling solos as well as solid backup by using influences ranging from his thorough grounding in blues to his mastery of Jesse McReynolds' "split string" technique. Tom is a veteran of Laurie Lewis & Grant Street and Done Gone, and has been the fiddler in High Country, the west coast's premier traditional bluegrass band, for nearly 20 years.

Dan Booth (acoustic bass) has been playing and singing bluegrass for half of his 28 years. Born and raised in Alaska, where he performed with Ginger Boatwright, Bearfoot Bluegrass, and several regional groups, Dan's now a Bay Area resident and part of 49 Special and Homespun Rowdy as well as the KKB. He's also a frequent guest with local and touring bands, recently with Ralph Stanley as well as the Laurie Lewis-Kathy Kallick Band. Dan's soulful lead and harmony singing, as well as rock-solid bass playing, provide a perfect compliment to Kathy's music.

Dan's Dad, Greg Booth (dobro, banjo), still lives in Anchorage, where, for many years, he's played pedal steel guitar in country groups—as well as banjo (which he first learned from Bill Emerson) and, more recently, dobro in legendary Alaskan bluegrass bands like Fault Line and Rank Strangers. Winner of the RockyGrass dobro competition in 2006, and is a regular participant in WinterGrass' Resomania Workshop.

Kids On Bluegrass



Stars like Bradley Walker, shown here, often sit in with KOB.

For the 19th year in a row the Kids on Bluegrass will be performing once again on the main stage at the Fathers Day Festival in Grass Valley on Friday at 5:10 PM and on Saturday at 5:10 PM. Under the direction of Frank Solivan and his staff, The Kids on Bluegrass (KOB) have provided some great entertainment over the years and promises to do so again this year!

Over the years, we have watched many of these kids grow up into world class performers that we are all proud of and there is no doubt in my mind that the time spent in the Kids on Bluegrass program is very instrumental in kids developing not only their musicianship but their self confidence

and self esteem. Today, because of this program, we can watch future bluegrass stars in the making, more kids that may someday grace our stages as professional performers. Won't you please come and enjoy the show that these wonderful kids want to present to you?

You are also welcome to stop by the rehearsal area in the tent area to watch how we put this show together. Rehearsals begin on Thursday morning at 10:00 Am and continue until to the last show on Saturday. If you have a child that might like to participate please bring them to meet with Frank Solivan. Please join us for the Kids On Bluegrass!

- Sharon Elliott

The James King Band

James King grew up in Carroll County, VA, one of the most fertile breeding grounds for bluegrass and old-time musicians. James' father, Jim, and his uncle, Joe Edd, were both musicians of note. As James entered his teens, he began to take the music seriously too, particularly the music of his fellow Virginians, the Stanley Brothers.

One of James' closest mentors was Ted Lundy, whose raw and heartfelt brand of bluegrass exerted a particularly strong influence on his music.

Following a stint in the Marine Corps, King relocated to Wilmington, Del., where he started a band with Lundy's sons, T.J. and Bobby. The Lundys introduced King to legendary bluegrass deejay Ray Davis, who paired King with Ralph Stanley for two mid-'80s releases, Stanley Brothers Classics and Reunion (also with George Shuffler), on his Wango label. In 1988, King released his first record under his own name, James King Sings Cold, Cold World. In the 1990s Rounder's Ken Irwin brought together Dudley Connell and a band of bluegrass all-stars to back up

King on 1994's 'These Old Pictures' and 1995's 'Lonesome and Then Some'.

King began to tour steadily, gradually assembling the James King Band. The group was named emerging artists of the year by the IBMA in 1997. 1998's 'Bed by the Window' was the recording debut of the James King Band. King released 30 Years of Farming in 2002 and 'The Bluegrass Storyteller' in 2005. In April 2009, James married Julie Lillard of Cascade, Virginia, and now resides in Danville, Virginia.

Ron Spears, mandolin and tenor vocals, has spent the last 37 years chasing his bluegrass dream. He has released three national recordings on Copper Creek Records as well as two independent projects. He was a member of Special Consensus and can be heard singing and playing mandolin on two albums. Both recordings feature great original songs written by Ron Spears.

Ron is a multi-instrumentalist and has performed with Special Consensus, Rhonda Vincent and The Rage, Doyle Lawson and

Quicksilver, David Parmley and Continental Divide and of course his own band Within Tradition. Ron has songs recorded by Daily and Vincent, IIIrd Tyme Out, Lou Reid and Carolina, Doyle Lawson and Quicksilver, Bluegrass Cardinals, Josh Williams and several other top bluegrass acts.

Tony Mabe, banjo and vocals, was born and raised in Walnut Cove, North Carolina. His love for music began at the early age of 4 years old when he started playing Southern Gospel style piano. Now at the age of 23, his instrumental abilities include banjo, upright bass, guitar, mandolin, autoharp, and piano. He says that his biggest influences are Earl Scruggs, Don Reno, Jimmy Mills, Allan Shelton, and Mother Maybelle Carter. Tony has played for former Bluegrass Boy and legend Bobby Atkins and the Countrymen (when he was only 14 years old) and also with Blue Circle Recording Artist, The Jeanette Wil-

liams Band. Tony is one of the very best traditional style banjo players in bluegrass today! And his singing ain't too shabby either! Heather and Tony reside in Meadows, North Carolina outside of Walnut Cove.

Cole Spears, upright bass, was born and raised in Pike County, Kentucky. Cole has been playing bluegrass music for 20 years.

He started playing bass and singing high harmony at the age of 11. Influences are the bass playing of Bob Moore and the vocals and bass playing of Lou Reid. When he is not out working on the road, he enjoys spending his free time with his wife Bridget and his daughter Rachelle.

James King



Laurie Lewis and the Right Hands

You can't measure Laurie Lewis's 30-year career with the usual commercial yardsticks. She has won a Grammy ("True Life Blues: The Songs of Bill Monroe," 1997), and twice been named Female Vocalist of the Year by the IBMA.

Laurie fell in love with American folk music as a teenager, at the sunset of the '60s folk revival. In her early 20s, she discovered the Bay Area bluegrass scene. To her, it was "like opening that door all over again. Here were all these people making music together, and I could immediately see myself as part of it. It woke up all that excitement I felt as a teenager, and I knew this was what I wanted to do with my life."

In the mid-70s, she helped found the Good Ol' Persons, an all-female ensemble that was soon headlining major folk and bluegrass festivals around the country, cheerfully breaking gender barriers that had kept women serving primarily as vocalists in male-dominated bands. She began writing her own songs then, inspired by bandmate Kathy Kallick, with whom she has collaborated many times over the years. It was in Lewis's next band, Grant Street Lewis began writing in earnest. Her songs helped shape the template for the modern bluegrass-pop style.

Lewis's performing companion is ace mandolin-singer Tom Rozum. Their 1996 CD, "The Oak and the Laurel," was nominated for a Grammy. "I love to have a partner to sing with, crave it deep down inside," Lewis says. "And Tom's the same way. He's a very



Laurie Lewis and the Right Hands.

conversational mandolin player, always responding to what's going on at the moment."

Todd Phillips has been appearing regularly with Laurie since the summer of 1996. An original member of the seminal David Grisman Quintet, Todd has also played and recorded with the Tony Rice Unit; the Bluegrass Album Band; Phillips, Grier & Flinner; and Psychograss. Best known for his consummate bassmanship. Todd also appears prominently on many albums by others, including Tom's and Laurie's "The Oak and the Laurel" and Laurie's "True Stories" and "Earth and Sky."

Craig Smith grew up in San Bernardino, CA. He and Laurie first met and began playing music together at the festivals in Norco in the mid-'70's. His playing has graced the albums of, to name a few, Jerry Douglas, Bobby Hicks, Herschel Sizemore and Ronnie Bowman. He has won Grammys

for his work on the "Dobro Summit" and Todd Phillips' "True Life Blues: the Songs of Bill Monroe." Craig is much in demand as a music teacher in and around Winston-Salem, NC, where he lives with his three children, Evan, Breanna and Caitlin.

Scott Huffman is a consummate musician on both guitar and banjo, his singing and easy-going temperament keep him in demand as a player throughout the Carolinas. He and Craig Smith began playing music together shortly after Craig moved from California to North Carolina some twenty-five years ago. He can be heard singing and playing on Craig's Rounder CD, "Craig Smith". A renaissance man or a living anachronism, Scott gardens, cooks, hunts and fishes, plays music and spins a good story. He doesn't own a computer and just bought an answering machine last year.

CBA Music Camp All-Stars



CBA Music Camp Allstars from a previous Father's Day Festival.

Each year, prior to the Father's Day Festival, the California Bluegrass Association produces a world class instructional music camp. The CBA Music Camp provides a chance for aspiring bluegrass and old-time musicians to spend several days learning from some of the most respected professionals in

their fields. The Camp hires teachers from all over the nation and an effort is made to draw artists from the ranks of the Father's Day Festival performers. The CBA likes to share a bit of the Camp experience with the Festival audience. An impromptu band is put together using instructors from the Music

Camp to give festival attendees a feel for the vitality and fun that comes when great performers collaborate.

This year the Music Camp All Stars will include Bill Evans, Keith Little, Jack Tuttle, Paul Knight, Tom Bekeny, Evo Bluestein, plus Ingrid Noyes.

Russell Moore and IIIrd Tyme Out

Led by the IBMA 2-time "Male Vocalist Of The Year", Russell Moore, IIIrd Tyme Out, consisting of Moore (guitar), Steve Dilling (banjo), Justen Haynes (fiddle), Wayne Benson (mandolin), and Edgar Loudermilk (bass), has walked away with IBMA's "Vocal Group Of The Year" award 7 consecutive years. All in all, the band has garnered 50 industry awards. Their a cappella renditions of many songs, featuring one of the most respected lead vocalists of all time, can rarely be matched.

Russell Moore was a founding member of IIIrd Tyme Out. In 1985, Russell went to work for the bluegrass band Doyle Lawson & Quicksilver. After six years, and seven recordings, with Quicksilver, Russell left to help form IIIrd Tyme Out in 1991. Russell has been awarded several 'Male Vocalist' awards to date, two of the most prestigious being the coveted 'Male Vocalist of the Year' by the IBMA. He lives in Cumming, GA, with his wife, Carol.

Steve Dilling fell in love with the banjo at the age of 10, after hearing a recording of Earl Scruggs playing the Foggy Mountain Breakdown. He finally got his first banjo on his 12th birthday, and he hasn't been quite the same since. After a few years of playing, in March of 1985, Steve joined regional favorites, The Bass Mountain Boys, and stayed there until a job with The Lonesome River Band opened in 1992. Then, in July of 1993, Steve, also known as 'Big Man', brought his banjo playing skills and emcee talents to IIIrd Tyme Out. His musical influences are varied, and include well known artists: Flatt & Scruggs, J. D. Crowe, Terry Baucom and Tony Rice. When off of the road, Steve enjoys spending time at home with his family, his wife, Macie, and his two children, Stephanie and Matt.

Ray Donnie Carver was born on August 16, 1961 in Portsmouth, Ohio to Donald and Jeanne Carver. He has always been surrounded by music on his father's side of the family. He has three sisters, two of whom played music in bands, as Donnie did, growing up. In 1996, IIIrd Tyme Out asked him if he'd be interested in taking a job as their full-time, audio technician and he jumped at the chance to work for a band of such top-notch quality. In 1998, Donnie and Karen had a son named Kurtis and, in 2003, a daughter named Jewel. Donnie thanks God everyday for his friends and family and says that prayer is the only way

to be prepared for anything. 'It works!'

Russell Justen Haynes was born on August 27, 1982 in Fredericksburg, VA. Justen grew up in a house where his mother and father toured with the gospel bluegrass band Sonrise. During college, he started playing and singing for Michelle Nixon and Drive. He played with Michelle for three years before God opened up the window of opportunity to play with IIIrd Tyme Out. Justen and Melanie just got married in January 2005.

Wayne Benson is one of bluegrass music's leading mandolinists and has established himself as a unique and gifted stylist. From Concord, NC, an area rich in bluegrass heritage, Benson first arrived on the scene as a teenager when Scott Vestal invited him to join Livewire. After three years and one album on Rounder Records, Wayne joined the well-known and critically acclaimed IIIrd Tyme Out in December of 1992. Wayne has had numerous IBMA awards and the SPBGMA Mandolin Player of the Year award, five consecutive years.

After living in Nashville for 16 years, Benson recently returned to the Carolinas, where he lives with his wife, Kristin, and son, Hogan. In addition to being a full-time member of IIIrd Tyme Out, he regularly records and freelances with many top, industry musicians.

Edgar Loudermilk has music running through his blood. A relative of the famous Louvin Brothers, Edgar started playing guitar and mandolin in his family's band at the age of 9. Edgar has played in bands such as Carolina Crossfire, Rhonda Vincent & The Rage, and most recently, Marty Raybon & Full Circle. In July 2007, Edgar became the bass player for IIIrd Tyme Out. He and his wife, Sonya, had their first child November 30, 2006. They reside in Eastanollee, GA.



Russell Moore and IIIrd Tyme Out

Dirk Powell and Riley Baugus



Riley Baugus and Dirk Powell.

Dirk Powell has expanded on the deeply rooted sounds of his Appalachian heritage to become one of the preeminent traditional American musicians of his generation. In addition to acclaimed releases on Rounder Records, he's recorded and performed with artists such as Loretta Lynn, Sting, Jack White, Levon Helm, Jewel, T-Bone Burnett, Ralph Stanley, and Linda Ronstadt, among others. Dirk founded the Cajun group Balfa Toujours with his wife Christine Balfa and is currently Artistic Director of the Festival of American Fiddle Tunes.

In his early teens, Dirk formed a musical bond with his grandfather, James Clarence Hay of Sandy Hook, Kentucky, and discovered a personal resonance with traditions that stretch back to Scots-Irish ancestors who came to the mountains in the middle of the 18th century. Dirk learned banjo and fiddle firsthand in continuation of this line. He was featured as part of "The Great High Mountain Tour," focusing on his multifaceted involvement with the Academy Award-winning film "Cold Mountain," for which he acted on screen, arranged traditional material, and served as on-set musical advisor and consultant.

His live performances of powerful Appalachian music with The Dirk Powell Band have inspired audiences across the globe in a wide variety of venues. Dirk selected and arranged traditional Appalachian material for Riverdance: The Show, in which he also performed on fiddle.

While Dirk has produced recordings for numerous artists around the country, he recently established his own studio in Louisiana, called the Cypress House.

Riley Baugus represents the best of old time American banjo and song. His powerful singing voice and his expert musicianship place him squarely in the next generation of the quality American roots tradition.

Riley first came to music through his family. His father had

left his roots in the mountains of North Carolina in the search for work, settling near Winston-Salem and bringing with him a love of old time music and a huge record collection.

With friend and neighbor, Kirk Sutphin, Riley began learning the Round Peak style at the knee of National Heritage Award winner Tommy Jarrell and other traditional musicians of the area, including Dix Freeman, Chester McMillian and former Camp Creek Boys members Verlin Clifton and Paul Sutphin.

Over the years, whilst working as a welder and a blacksmith by day, Riley played with many old time string bands, including the Old Hollow String Band and the Red Hots. His self-produced recording, "Life Of Riley" (Yodel-Ay-Hee, 2001), showcases his masterful, elegant banjo playing and his rich, raw boned singing voice.

One fateful day, Riley got a call from longtime friend and collaborator Dirk Powell. Dirk was involved in the music direction for the Academy Award-winning film "Cold Mountain" and had convinced the producers that they needed Civil War era banjos made in the Carolina hills, specifically Riley's handmade banjos. They also needed an authentic acapella ballad singer for the voice of Pangle, played by Ethan Suplee. A whirlwind Hollywood experience ensued, culminating in a place on the star studded "Great High Mountain" tour.

In 2008, a call from T-Bone Burnett put Riley back in the studio in Nashville, this time as a contributor to the Grammy award winning Album Of The Year, "Raising Sand" - the multi-million selling album by Alison Krauss and Robert Plant.

Riley has taught at camps and festivals around the world. When not teaching or building banjos, Riley can be found out on the road performing with the Dirk Powell Band. Riley makes his home near Winston-Salem, North Carolina.

Frank Solivan and Dirty Kitchen

Frank Solivan & Dirty Kitchen play a wide variety of New Acoustic American Roots Music focusing on bluegrass and acoustic country, yet blues, folk, swing, and jazz also shine through as influences. Powerful vocal harmonies, expressive songwriting, smooth ballads, and instrumental prowess lend this versatile group of musicians to any type of venue. Each member is an inventive powerhouse.

Frank Solivan is a singer of power and passion, a writer whose articulate songs go straight to the heart, and a multi-instrumentalist who combines the pure, hard drive of classic bluegrass with twenty-first century sophistication.

Mike Munford is one of the hidden treasures of the five string banjo world. Mike grew up in the sixties and seventies in the bluegrass

hotbed of Baltimore and D.C. and assimilated just about everything that all the great players in that area could offer. When Munford plays you hear all things that great banjo player strive to achieve. Power, drive, impeccable timing, exquisite tone and jaw-dropping technique.

Lincoln Meyers (guitar and vocals) presently makes his home in Durham, New Hampshire. Lincoln has soaked up the flawless styles of the great masters -- Doc Watson, Tony Rice, Norman Blake, David Grier and synthesized it into his own style defined by flat out good taste -- whether it be a slow ballad or an instrumental at break-neck speed. Watch him play a lead guitar break at 170 beats per minute and you'll ask yourself, "Did I just hear Lincoln Meyers nail that, at that speed, and not miss a single

note on an old Martin D-18 with high action?" Yes you did. In that regard, Lincoln fits right in with this high-powered ensemble.

Stefan Custodi (bass and vocals) is a natural born musician. Put an instrument in his hand -- any instrument and he'll instantly make music. His instrument of choice is the stand up bass. Hailing from Aiken, South Carolina, Stefan has a deep appreciation of rootsy, earthy songs that make up some of the bluegrass repertoire. The simple lyrical line that speaks volumes about hardship or lost love or lost home or found faith. Stefan also has just the right touch of gravel, of real life, in his voice that lends itself to the perfect expression of those lines. Stefan Custodi -- a natural -- as the heartbeat of "Dirty Kitchen."



Frank Solivan and Dirty Kitchen.

The Tuttles with special guest AJ Lee

The Tuttles with special guest AJ Lee are a mostly kids band playing bluegrass and old-time music based in Palo Alto, CA. They feature two of the finest young singers in the country with Molly Tuttle and AJ Lee and the high-speed picking of Molly's brothers, Sullivan and Michael. Under the musical direction of their father, Jack, a long-time bluegrass musician and teacher, The Tuttles with AJ Lee have impressed audiences with their high-level bluegrass skills.

Molly Tuttle (16) is the lead singer and multi-instrumentalist. Whether playing bluegrass banjo, old-time banjo or flatpicking guitar, Molly has captured attention on the national bluegrass scene with her high level playing and singing.

AJ Lee (12) is one of the finest young bluegrass singers in the country. With a full voice that reflects a deep understanding of bluegrass singing, she has captured the attention of many in the bluegrass music community. By the age of eight, she was being asked to perform at major bluegrass events, including the IBMA FanFest in Nashville. With The Tuttles she

plays mandolin, but she also plays guitar, fiddle and banjo.

Sullivan Tuttle (14) plays guitar and is a rapidly developing star of flatpicking bluegrass. Able to play at the fastest of bluegrass tempos, Sullivan has been performing on stage since the age of eight. His solos are a surprisingly complex blend of virtuosity and taste.

Michael Tuttle (12) has been playing mandolin for six years and has no trouble keeping up with

his older siblings. Whether it's a Monroe style traditional piece, or a jazzy number, Michael shows a command of his instrument that belies his young age.

Jack Tuttle is the band's bass player, vocalist and music director. He is an honorary lifetime member of the California Bluegrass Association and has been a full-time bluegrass teacher for thirty years. Jack has played in the California bluegrass scene since the 1980's.



The Tuttles with special guest AJ Lee.

Rhonda Vincent and the Rage



Rhonda Vincent and the Rage.

Rhonda Vincent's destination was determined long before she even realized it. Bluegrass being the family business, waking up each morning to the sounds of music, and spending each afternoon and evening playing the music her family plotted as their destination before she was even born.

In 2009, Rhonda Vincent moves toward her destination in life, with exciting changes, by introducing

new music, and new members. With her goal clearly in focus, while climbing to new heights; she surrounds herself with a fresh new aura. The Wall Street Journal deemed her The NEW Queen of Bluegrass, but this All American Bluegrass Girl continues a rigorous tour schedule, and tireless work ethic; traveling and touring in the tradition of Flatt & Scruggs, on the Martha White Bluegrass Express, while living

raising the bluegrass bar to a higher echelon. Each member singing on a variety of songs, with various combinations; and contributing music tailored to their talents, of historical precedence.

Songs collected from around the world. Introducing new writers from destinations as far reaching as New Zealand, North Carolina, and California -- Destination Life, Heart Wrenching Lovesick Memories,

her dream and perfecting her newest Rounder Records project Destination Life.

"Destination Life" presents the bluegrass queen and her court, at the top of their game; and the greatest edition of The Rage formed to date.

Destination Life features only Rhonda and her Rage members; showing off the multitude of talents, musically and vocally; and

Anywhere Is Home. Three originals co-written with friends -- What A Woman Wants To Hear, Last Time Loving You, I Heard My Saviour Calling Me. And familiar favorites like -- Stop The World, Crazy Love, 8th of January, and an inspirational straight from the hymnal, "When I Travel My Last Mile". These, along with songs from seasoned writers Pete Goble and Paulette Carlson -- I Can Make Him Whisper, Crazy What A Lonely Heart Will Do.

Destination Life projects a new vigor, cleverly crafted, and passionately delivered by award winning musicians:

Hunter Berry begins his 8th year as a member of the Rage -- featured on fiddle and mandolin. He lends his unique vocal style to the newly penned "I Heard My Saviour Calling Me." He recently bought his first home, and lives in his hometown of Elizabethton, Tennessee.

Mickey Harris cumulatively begins his 8th year as a member of the Rage -- Mickey is featured on acoustic bass and brings a new instrument to The Rage sound with a WEBER Resophonic Guitar. He also lends his high-tenor harmony on many cuts. Mickey grew up performing in a musical family in Murfreesboro, Tennessee; and continues to live in the area with his wife Crystal, daughter Mikayla, and son Jackson.

Ben Helson is a relative newcomer to the bluegrass world. Born in the bluegrass state of Kentucky, toured with Ricky Skaggs & Kentucky Thunder, while simultaneously attending Bethel College in McKenzie, Tennessee. Ben leaves listeners spell bound with his expressive guitar work and vocal prowess; matching the 7-Time Female Vocalist of the Year note for note, as their voices blend beautifully together on the waltzing ballad "Crazy What A Lonely Heart Will Do".

Aaron McDaris moves to the forefront as one of the top banjo players in bluegrass today, as he fingers his way throughout the project with innovative interplay on both banjo and 3-finger style guitar. His rich vocals are a warm addition to the trios on "I Can Make Him Whisper" and "Heart Wrenching Lovesick Memories"; and complete the gospel ensemble with his step-out bass vocal.

Rhonda Vincent leads the men of the Rage throughout the entire session. Singing with a renewed quality that reflects a relaxed yet refined performer. Her mandolin style tingles through several tunes, defining a distinct player, who can show her stuff, or support her band mates to build the foundation for one of the most popular groups of today's generation of bluegrass music.

Kentucky

TAKE A TRIP BACK TO 1923... IN A NEW KM-1000 KENTUCKY MASTER MODEL MANDOLIN!



KM-1000

The KM-1000 Kentucky Master Model Mandolin was introduced in the late 1970s in response to players' and collectors' requests for a mandolin that duplicated the best vintage instruments in every point of tone, appearance and finish.

Kentucky Master Models are again being constructed to the same standard of quality. Only the finest American spruce and maple is hand-carved and graduated for the tops and backs. Deluxe 14:1 reverse tuners, Pre-war style ebony bridge and side-striped w/b/w ivoroid body binding all reek vintage.

Take a trip back to the early '20s on the Kentucky time machine... it is surprisingly affordable!

KM-1000 FEATURES

- Handcarved, graduated North American spruce and maple
- Ebony fingerboard and adjustable bridge
- Traditional high-gloss Nitrocellulose lacquer sunburst finish with ivoroid binding
- Genuine, original "Flower Pot" inlay of abalone and mother-of-pearl
- Silver-plated and engraved hardware

Saga Musical Instruments • P.O. Box 2841 • South San Francisco, CA 94080 • www.sagamusical.com



Blueridge

The Youngest of the Old-Timers... The New Larry Sparks Signature Model Blueridge Guitar!



In the mid-1960s Ralph and Carter Stanley saw something in a boy from Lebanon, Ohio. From those early days with the Stanley Brothers, Larry Sparks has developed his own dynamic style while staying true to the traditions of that good old-time country music. Those powerful lead guitar breaks, paired with soulful vocals have endeared him to Bluegrass Music Lovers everywhere.

The Larry Sparks Signature Model Blueridge is based on the unique design elements of the guitar that is so closely identified with his career. The power and tradition are built in and the guitar, like Larry Sparks himself, is already being called "The Youngest of the Old-Timers!"

BR-3060 Larry Sparks Signature Guitar:

- Full-size black pickguard
- Vintage '50s style waffle-back tuners
- Certificate of Authenticity



Saga Musical Instruments
P.O. Box 2841 • South San Francisco, CA 94080
Visit us at www.sagamusical.com

BR-3060

GUGLIELMO WINERY

MORGAN HILL, CALIFORNIA

THE PERFECT PLACE FOR YOUR WINE TASTING EXPERIENCE OR SPECIAL EVENT

PROUD SPONSOR OF
THE CALIFORNIA BLUEGRASS ASSOCIATION'S
35TH ANNUAL FATHER'S DAY FESTIVAL



**TASTING ROOM
GIFT SHOP**

**AWARD WINNING WINES
UNIQUE WINE GIFTS
GOURMET FOOD ITEMS
OPEN 10AM - 5PM DAILY**

**VILLA EMILE
EVENT CENTER
LET US PLAN YOUR:
WEDDING
CORPORATE EVENT
PRIVATE PARTY**

**MONTHLY WINE SPECIALS
IN OUR TASTING ROOM
ASK OUR FRIENDLY STAFF FOR DETAILS**

**1480 EAST MAIN AVENUE • MORGAN HILL, CA • 408-779-2145
WWW.GUGLIELMOWINERY.COM**

D'Addario

THE INFAMOUS STRINGDUSTERS



D'Addario & Company, Inc., 1 Farmingdale, NY 11735 USA | WWW.DADDARIO.COM
 D'Addario, EXP, and EXP are registered trademarks of D'Addario & Company, Inc. or its affiliates
 in the United States and/or other countries. ©2009 All rights reserved.



MAIN STAGE

WEDNESDAY

VERN'S STAGE

Wednesday Night Festival Kickoff!

BLUEGRASS PIONEERS STAGE

THURSDAY

Emcee Rick Cornish

9:45-10:00a Opening Comments
 10:00-10:50a The Bluegrass Patriots
 11:00-11:50a G-2
 12:00-12:50p High Country

12:50 - 3:00p Lunch and Workshops

Emcee Cuzin Al

3:00-3:50p G-2
 4:00-4:50p Music Camp All Stars
 5:00-5:50p Michael Cleveland & Flamekeeper

5:50-7:40p Dinner and Workshops

Emcee Dave Gooding

7:40-8:30p High Country
 8:40-9:30p The Infamous Stringdusters
 9:40-10:40p Dirk Powell Band

6:00p FS & Dirty Kitchen Band Workshop
 7:00p New CD Releases Showcase
 8:00p Frank Solivan & Dirty Kitchen

Then Jamming 101 with Sid Lewis!

4:00p Music Camp
 Student Concert

12:50-1:30p Bluegrass Conspiracy
 1:35-2:15p The Kentucky Twisters
 2:20-3:00p Banner Mountain Boys

The Bluegrass Pioneers Stage is located at the end of the row of food vendors

5:50-6:40p The Knuckle Knockers
 6:45-7:40p Ragged But Right

5:55-6:45p Anderson Family Bluegrass
 6:55-7:40p The Bluegrass Patriots

Weds Night at Vern's brought to you by

FRIDAY

Emcee Eric Rice

10:00-10:50a G-2
 11:00-11:50a The Bluegrass Patriots
 12:00-12:50p The Infamous Stringdusters

12:50-3:00p Lunch and Workshops

Emcee Larry Carlin

3:00-3:50p Michael Cleveland & Flamekeeper
 4:00-4:50p Dirk Powell Band
 5:00-5:10p Board Introductions
 5:10-6:00p Kids on Bluegrass

6:00-7:10p Dinner and Workshops

Emcee Chuck Poling

7:10-8:00p Frank Solivan & Dirty Kitchen
 8:10-9:00p Dirk Powell Band
 9:10-10:00p Michael Cleveland & Flamekeeper
 10:10-11:00p The Infamous Stringdusters



With your Emcee Paul Sato!

12:50-1:30p Compost Mountain Boys
 1:35-2:15p Keystone Station
 2:20-3:00p Natural Drift

12:55-1:45p G-2
 1:55-3:00p The Tuttles with A.J. Lee

6:00-6:30p Mountain Drive
 6:35-7:10p California Borderline Band

6:10-7:00p High Country

Vern's serves beer from the Sierra Nevada Brewery and wine from the Guglielmo Winery from 11 am to 10 pm.



SATURDAY

Emcee Ray Edlund

10:00-10:50a Anderson Family Bluegrass
 11:00-11:50a Frank Solivan & Dirty Kitchen
 12:00-12:50p The Kathy Kallick Band

12:50-3:00p Lunch and Workshops

Emcee Peter Thompson

3:00-3:50p Russell Moore & Illrd Tyme Out
 4:00-4:50p Rhonda Vincent and The Rage
 5:00-5:10p Awards Presentation
 5:10-6:00p Kids on Bluegrass

6:00-7:10p Dinner and Workshops

Emcee J.D. Rhynes

7:10-8:00p Laurie Lewis and the Right Hands
 8:10-9:00p The James King Band
 9:10-10:00p Rhonda Vincent and The Rage
 10:10-11:00p Russell Moore & Illrd Tyme Out

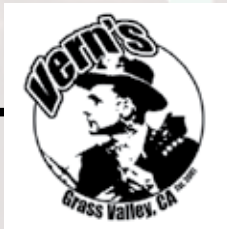
Please no alcohol in the mainstage area. Thanks!

12:50-1:30p Farm Fresh
 1:35-2:15p OMGG
 2:20-3:00p Windy Hill

12:55-1:45p Laurie Lewis and the Right Hands
 1:55-2:50p Frank Solivan & Dirty Kitchen

6:00-7:10p Old Pals

6:00-7:10p The Kathy Kallick Band



SUNDAY

Emcee Lisa Burns

10:00-10:50a The James King Band (gospel)
 11:00-11:50a The Kathy Kallick Band
 12:00-12:50p Laurie Lewis and the Right Hands

12:50-2:00p Lunch and Workshops

Emcee J.D. Rhynes

2:00-2:50p Rhonda Vincent and The Rage
 3:00-3:55p Russell Moore & Illrd Tyme Out

12:50-2:00p The Brombies

1:00-1:50p The James King Band

June 17th - 20th, 2010